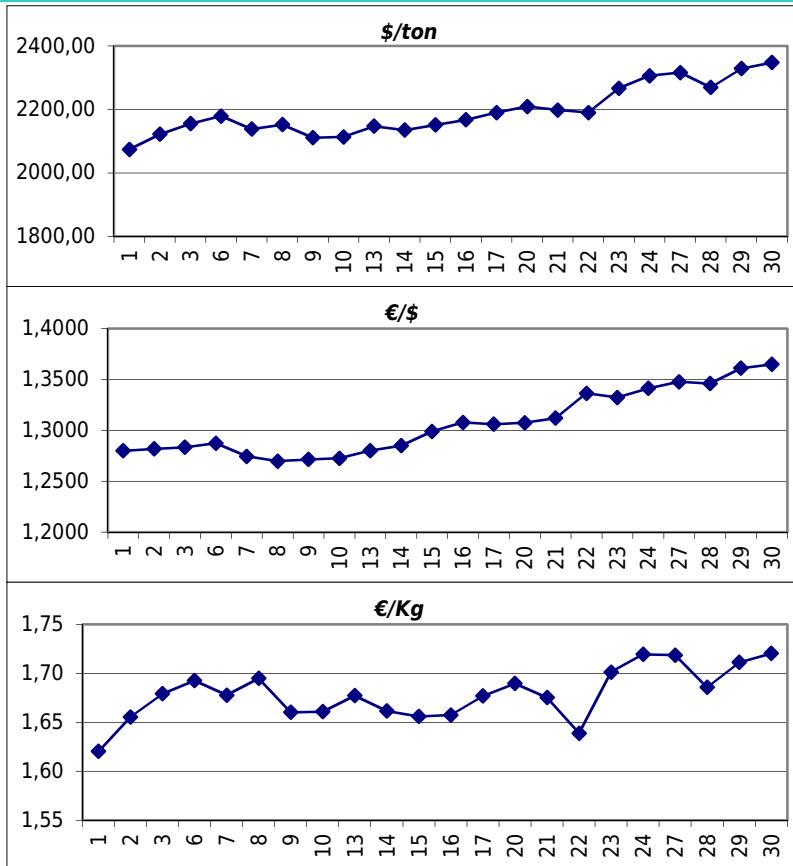


Daily values for the year: 2010 month: 9

Day	\$/ton	€/€	€/Kg
1	2.074,0	1,2800	1,62
2	2.122,0	1,2818	1,66
3	2.155,0	1,2834	1,68
4			
5			
6	2.179,0	1,2874	1,69
7	2.138,0	1,2744	1,68
8	2.152,0	1,2697	1,69
9	2.111,0	1,2715	1,66
10	2.113,5	1,2725	1,66
11			
12			
13	2.147,0	1,2801	1,68
14	2.135,0	1,2850	1,66
15	2.151,0	1,2989	1,66
16	2.167,5	1,3078	1,66
17	2.190,0	1,3060	1,68
18			
19			
20	2.209,0	1,3074	1,69
21	2.198,0	1,3120	1,68
22	2.190,0	1,3364	1,64
23	2.266,5	1,3323	1,70
24	2.306,0	1,3412	1,72
25			
26			
27	2.316,0	1,3477	1,72
28	2.269,0	1,3460	1,69
29	2.329,0	1,3611	1,71
30	2.348,0	1,3648	1,72



Last 24 months average €/Kg

Month	€/Kg
10/2008	1,63
11/2008	1,50
12/2008	1,15
1/2009	1,09
2/2009	1,07
3/2009	1,05
4/2009	1,11
5/2009	1,10
6/2009	1,15
7/2009	1,20
8/2009	1,38
9/2009	1,28
10/2009	1,29
11/2009	1,33
12/2009	1,51
1/2010	1,59
2/2010	1,52
3/2010	1,65
4/2010	1,75
5/2010	1,65
6/2010	1,61
7/2010	1,57
8/2010	1,64
9/2010	1,68

