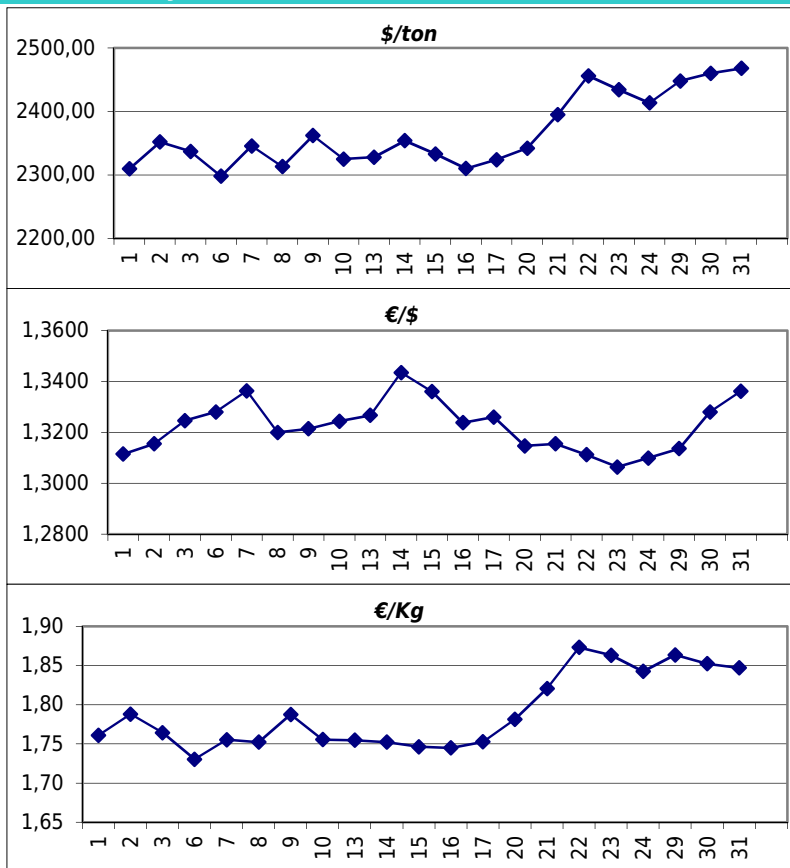


### Daily values for the year: 2010 month: 12

Day	\$/ton	€/€	€/Kg
1	2.309,5	1,3115	1,76
2	2.352,0	1,3155	1,79
3	2.337,0	1,3246	1,76
4			
5			
6	2.298,0	1,3280	1,73
7	2.345,5	1,3363	1,76
8	2.313,0	1,3200	1,75
9	2.362,0	1,3214	1,79
10	2.325,0	1,3244	1,76
11			
12			
13	2.328,0	1,3267	1,75
14	2.354,0	1,3435	1,75
15	2.333,0	1,3360	1,75
16	2.310,0	1,3238	1,74
17	2.324,0	1,3260	1,75
18			
19			
20	2.342,0	1,3147	1,78
21	2.395,0	1,3155	1,82
22	2.456,0	1,3112	1,87
23	2.434,0	1,3064	1,86
24	2.413,5	1,3099	1,84
25			
26			
27		1,3136	
28		1,3195	
29	2.448,0	1,3136	1,86
30	2.460,0	1,3280	1,85
31	2.468,0	1,3362	1,85



### Last 24 months average €/Kg

Month	€/Kg
1/2009	1,09
2/2009	1,07
3/2009	1,05
4/2009	1,11
5/2009	1,10
6/2009	1,15
7/2009	1,20
8/2009	1,38
9/2009	1,28
10/2009	1,29
11/2009	1,33
12/2009	1,51
1/2010	1,59
2/2010	1,52
3/2010	1,65
4/2010	1,75
5/2010	1,65
6/2010	1,61
7/2010	1,57
8/2010	1,64
9/2010	1,68
10/2010	1,71
11/2010	1,73
12/2010	1,79

