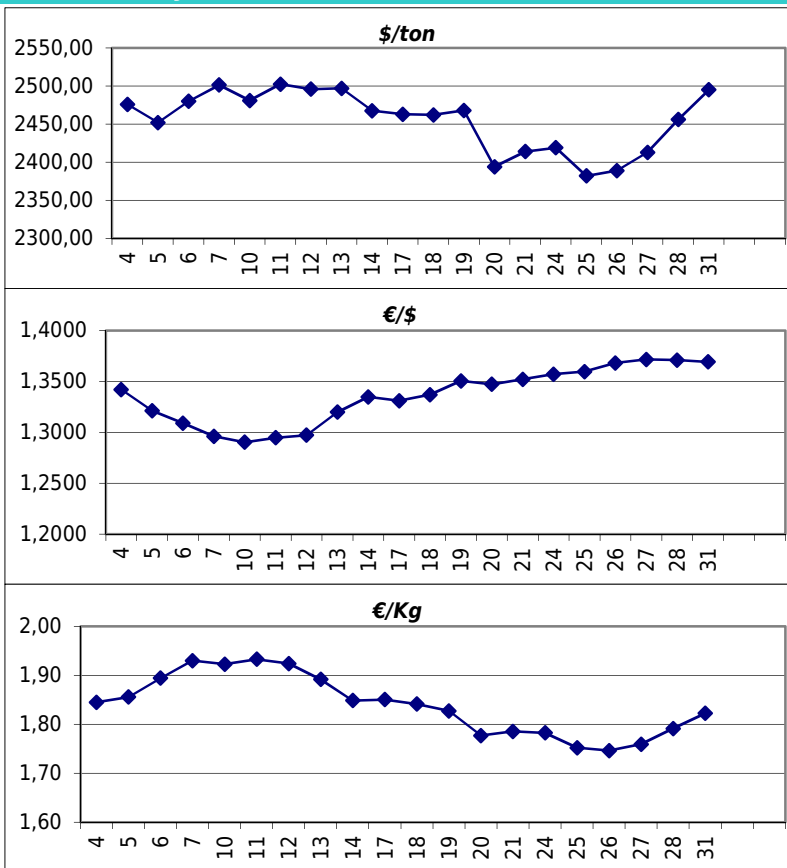


Daily values for the year: 2011 month: 1

Day	\$/ton	€/€	€/Kg
1			
2			
3		1,3348	
4	2.476,0	1,3421	1,84
5	2.452,0	1,3213	1,86
6	2.480,0	1,3091	1,89
7	2.501,5	1,2961	1,93
8			
9			
10	2.481,0	1,2903	1,92
11	2.502,5	1,2948	1,93
12	2.496,0	1,2973	1,92
13	2.497,0	1,3199	1,89
14	2.467,5	1,3349	1,85
15			
16			
17	2.463,0	1,3311	1,85
18	2.462,0	1,3371	1,84
19	2.468,0	1,3506	1,83
20	2.394,0	1,3472	1,78
21	2.414,0	1,3521	1,79
22			
23			
24	2.419,0	1,3571	1,78
25	2.382,0	1,3596	1,75
26	2.389,0	1,3681	1,75
27	2.413,0	1,3716	1,76
28	2.456,0	1,3710	1,79
29			
30			
31	2.495,0	1,3692	1,82



Last 24 months average €/Kg

Month	€/Kg
2/2009	1,07
3/2009	1,05
4/2009	1,11
5/2009	1,10
6/2009	1,15
7/2009	1,20
8/2009	1,38
9/2009	1,28
10/2009	1,29
11/2009	1,38
12/2009	1,51
1/2010	1,59
2/2010	1,52
3/2010	1,65
4/2010	1,75
5/2010	1,65
6/2010	1,61
7/2010	1,57
8/2010	1,64
9/2010	1,68
10/2010	1,71
11/2010	1,73
12/2010	1,79
1/2011	1,84

