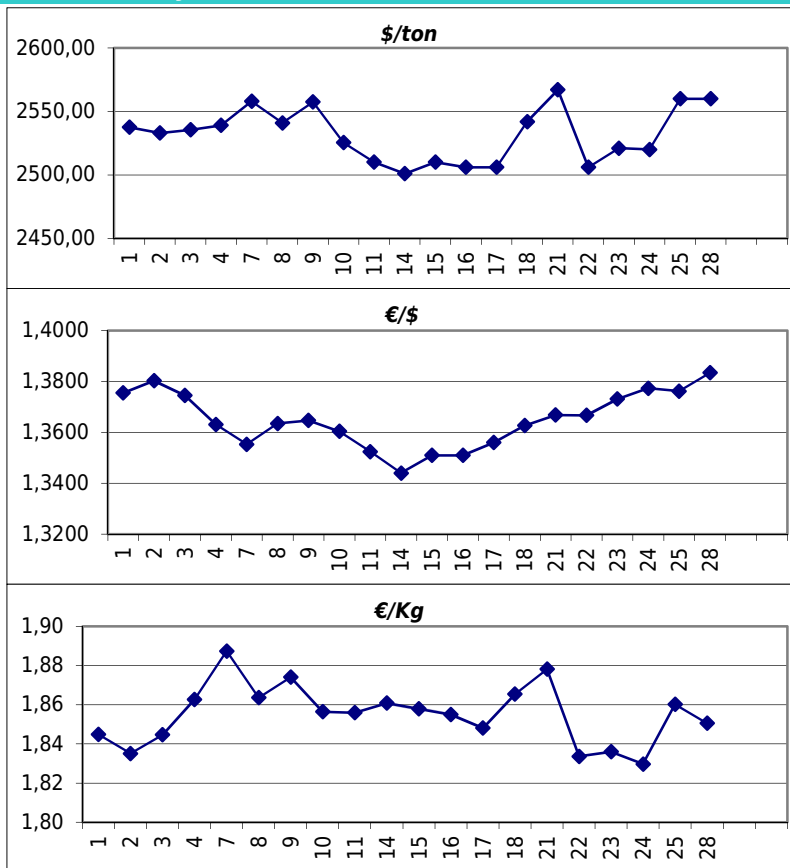


### Daily values for the year: 2011 month: 2

Day	\$/ton	€/€	€/Kg
1	2.537,5	1,3755	1,84
2	2.533,0	1,3803	1,84
3	2.535,5	1,3745	1,84
4	2.539,0	1,3631	1,86
5			
6			
7	2.558,0	1,3553	1,89
8	2.541,0	1,3635	1,86
9	2.557,5	1,3647	1,87
10	2.525,5	1,3604	1,86
11	2.510,0	1,3524	1,86
12			
13			
14	2.501,0	1,3440	1,86
15	2.510,0	1,3510	1,86
16	2.506,0	1,3510	1,85
17	2.506,0	1,3560	1,85
18	2.542,0	1,3627	1,87
19			
20			
21	2.567,0	1,3668	1,88
22	2.506,0	1,3667	1,83
23	2.521,0	1,3731	1,84
24	2.520,0	1,3773	1,83
25	2.560,0	1,3762	1,86
26			
27			
28	2.560,0	1,3834	1,85



### Last 24 months average €/Kg

Month	€/Kg
3/2009	1,05
4/2009	1,11
5/2009	1,10
6/2009	1,15
7/2009	1,20
8/2009	1,38
9/2009	1,28
10/2009	1,29
11/2009	1,33
12/2009	1,51
1/2010	1,59
2/2010	1,52
3/2010	1,65
4/2010	1,75
5/2010	1,65
6/2010	1,61
7/2010	1,57
8/2010	1,64
9/2010	1,68
10/2010	1,71
11/2010	1,73
12/2010	1,79
1/2011	1,84
2/2011	1,85

