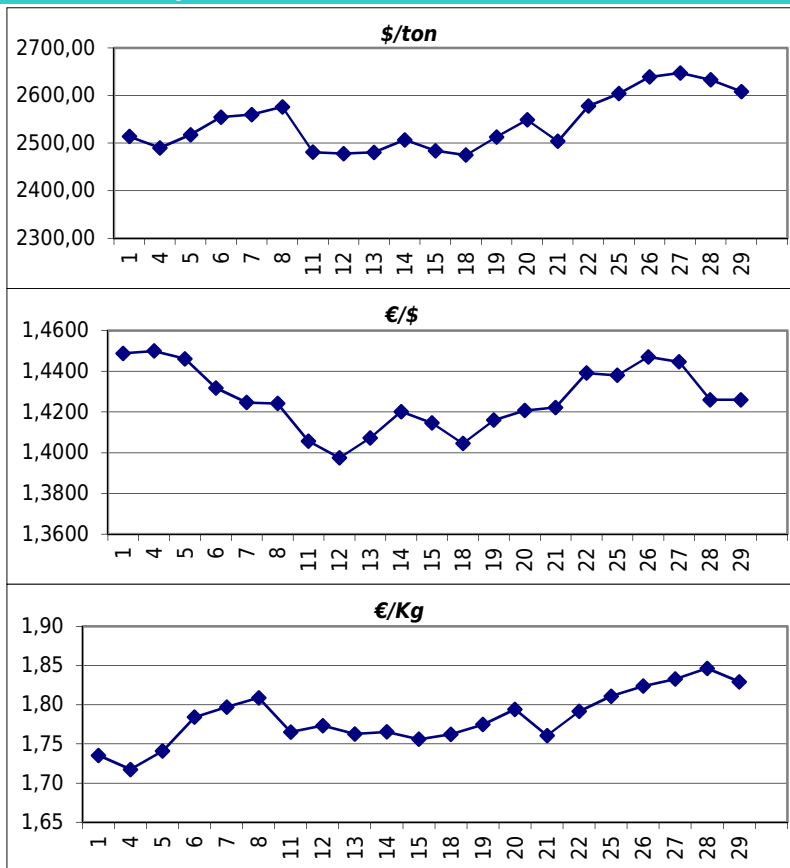


Daily values for the year: 2011 month: 7

Day	\$/ton	€/€	€/Kg
1	2.514,0	1,4488	1,74
2			
3			
4	2.490,0	1,4500	1,72
5	2.517,5	1,4461	1,74
6	2.554,5	1,4318	1,78
7	2.560,0	1,4247	1,80
8	2.576,0	1,4242	1,81
9			
10			
11	2.481,0	1,4056	1,77
12	2.478,0	1,3975	1,77
13	2.480,5	1,4073	1,76
14	2.507,0	1,4202	1,77
15	2.484,0	1,4146	1,76
16			
17			
18	2.475,0	1,4045	1,76
19	2.513,0	1,4160	1,77
20	2.549,0	1,4207	1,79
21	2.504,0	1,4222	1,76
22	2.578,0	1,4391	1,79
23			
24			
25	2.604,0	1,4380	1,81
26	2.639,0	1,4471	1,82
27	2.647,5	1,4446	1,83
28	2.633,0	1,4260	1,85
29	2.608,5	1,4260	1,83
30			
31			



Last 24 months average €/Kg

Month	€/Kg
8/2009	1,38
9/2009	1,28
10/2009	1,29
11/2009	1,33
12/2009	1,51
1/2010	1,59
2/2010	1,52
3/2010	1,65
4/2010	1,75
5/2010	1,65
6/2010	1,61
7/2010	1,57
8/2010	1,64
9/2010	1,68
10/2010	1,71
11/2010	1,73
12/2010	1,79
1/2011	1,84
2/2011	1,85
3/2011	1,85
4/2011	1,86
5/2011	1,81
6/2011	1,80
7/2011	1,78

