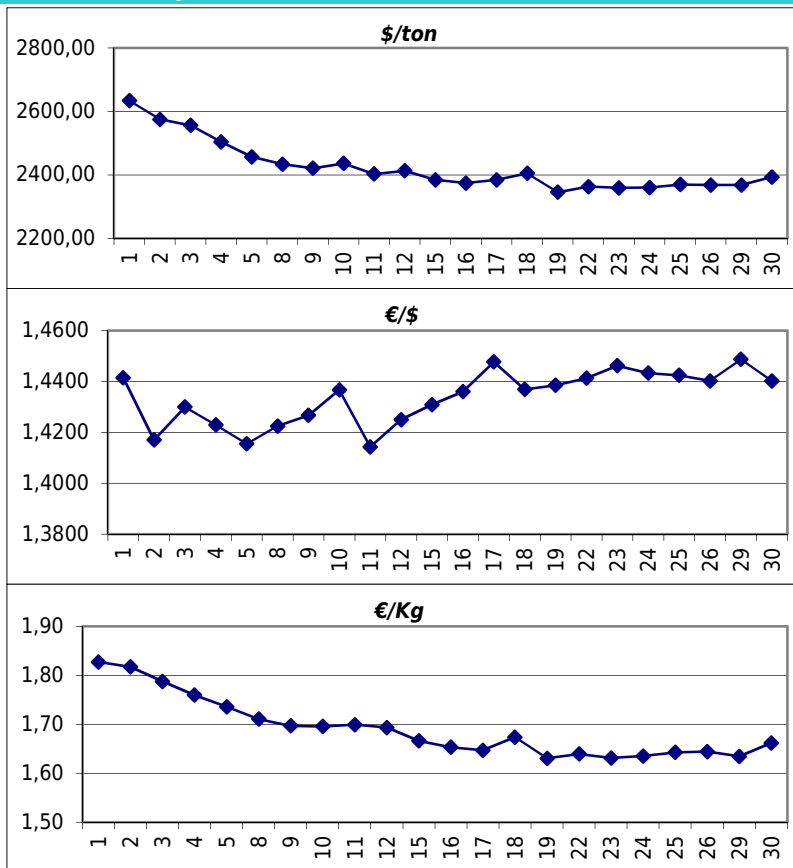


Daily values for the year: 2011 month: 8

Day	\$/ton	€/€	€/Kg
1	2.634,0	1,4415	1,83
2	2.575,0	1,4170	1,82
3	2.556,0	1,4300	1,79
4	2.504,0	1,4229	1,76
5	2.457,0	1,4155	1,74
6			
7			
8	2.433,5	1,4225	1,71
9	2.421,0	1,4267	1,70
10	2.436,0	1,4367	1,70
11	2.403,0	1,4143	1,70
12	2.413,0	1,4250	1,69
13			
14			
15	2.384,0	1,4309	1,67
16	2.374,0	1,4360	1,65
17	2.384,0	1,4477	1,65
18	2.405,0	1,4369	1,67
19	2.345,5	1,4385	1,63
20			
21			
22	2.363,0	1,4413	1,64
23	2.359,0	1,4462	1,63
24	2.360,0	1,4433	1,64
25	2.369,5	1,4424	1,64
26	2.368,0	1,4402	1,64
27			
28			
29	2.368,0	1,4487	1,63
30	2.393,5	1,4402	1,66
31	2.442,0	1,4450	1,69



Last 24 months average €/Kg

Month	€/Kg
9/2009	1,28
10/2009	1,29
11/2009	1,33
12/2009	1,51
1/2010	1,59
2/2010	1,52
3/2010	1,65
4/2010	1,75
5/2010	1,65
6/2010	1,61
7/2010	1,57
8/2010	1,64
9/2010	1,68
10/2010	1,71
11/2010	1,73
12/2010	1,79
1/2011	1,84
2/2011	1,85
3/2011	1,85
4/2011	1,86
5/2011	1,81
6/2011	1,80
7/2011	1,78
8/2011	1,69

