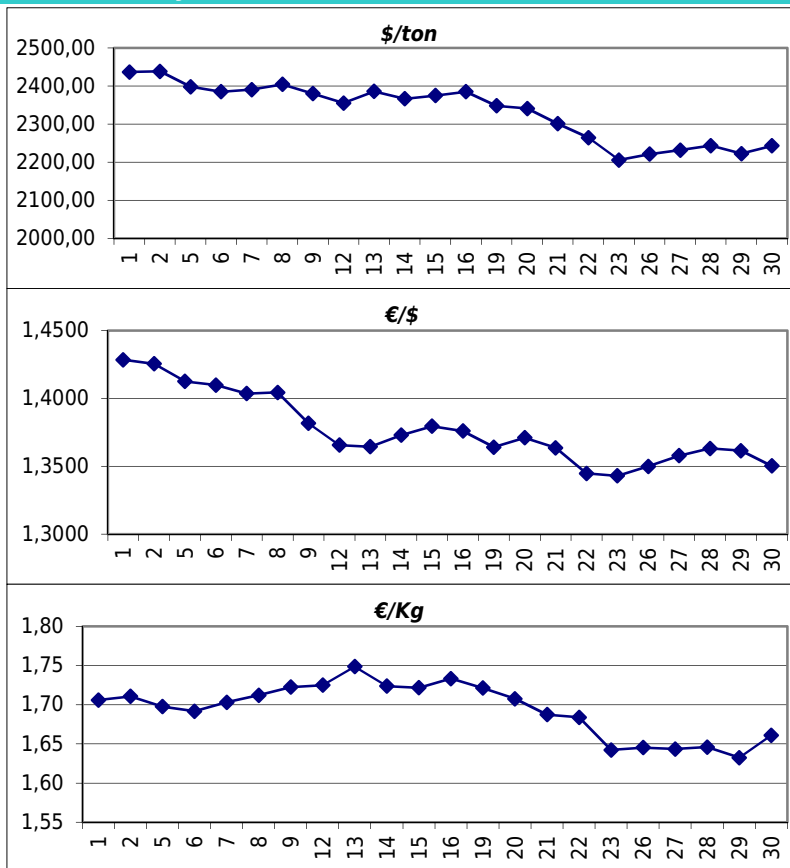


Daily values for the year: 2011 month: 9

Day	\$/ton	€/€	€/Kg
1	2.437,0	1,4285	1,71
2	2.438,5	1,4255	1,71
3			
4			
5	2.398,0	1,4126	1,70
6	2.385,0	1,4099	1,69
7	2.390,5	1,4036	1,70
8	2.404,5	1,4044	1,71
9	2.380,0	1,3817	1,72
10			
11			
12	2.355,5	1,3656	1,72
13	2.386,0	1,3645	1,75
14	2.366,5	1,3729	1,72
15	2.375,0	1,3795	1,72
16	2.385,0	1,3760	1,73
17			
18			
19	2.348,0	1,3641	1,72
20	2.341,0	1,3710	1,71
21	2.301,0	1,3636	1,69
22	2.264,5	1,3448	1,68
23	2.205,5	1,3430	1,64
24			
25			
26	2.221,0	1,3500	1,65
27	2.231,5	1,3579	1,64
28	2.243,5	1,3631	1,65
29	2.222,5	1,3615	1,63
30	2.243,0	1,3503	1,66



Last 24 months average €/Kg

Month	€/Kg
10/2009	1,29
11/2009	1,33
12/2009	1,51
1/2010	1,59
2/2010	1,52
3/2010	1,65
4/2010	1,75
5/2010	1,65
6/2010	1,61
7/2010	1,57
8/2010	1,64
9/2010	1,68
10/2010	1,71
11/2010	1,73
12/2010	1,79
1/2011	1,84
2/2011	1,85
3/2011	1,85
4/2011	1,86
5/2011	1,81
6/2011	1,80
7/2011	1,78
8/2011	1,69
9/2011	1,69

