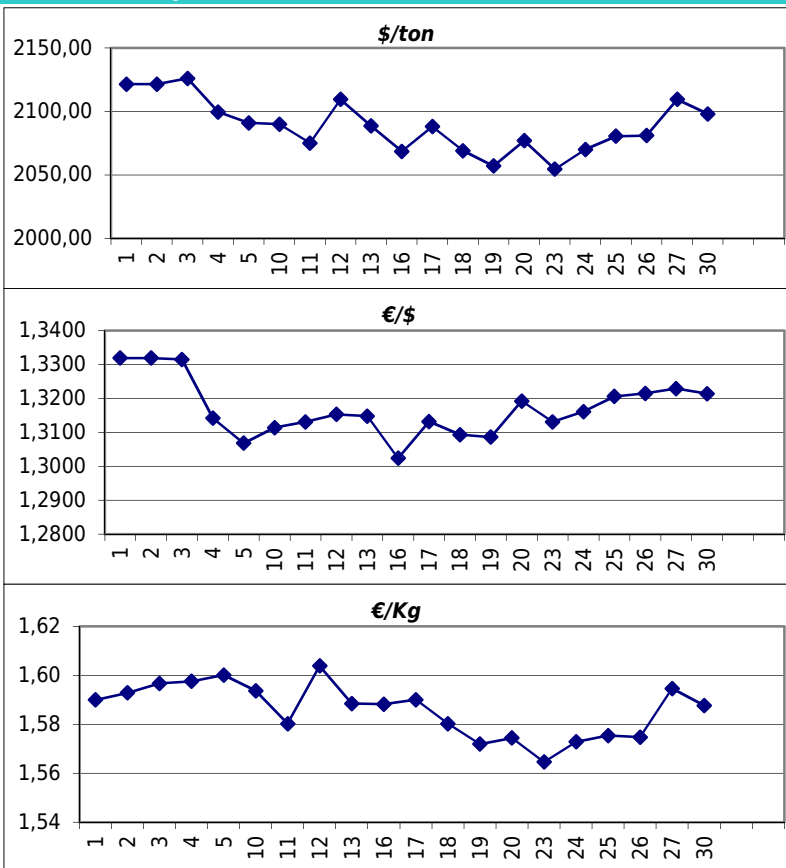


Daily values for the year: 2012 month: 4

Day	\$/ton	€/€	€/Kg
1			
2	2.121,5	1,3319	1,59
3	2.126,0	1,3315	1,60
4	2.099,5	1,3142	1,60
5	2.091,0	1,3068	1,60
6			
7			
8			
9			
10	2.090,0	1,3114	1,59
11	2.075,0	1,3131	1,58
12	2.109,5	1,3153	1,60
13	2.088,5	1,3148	1,59
14			
15			
16	2.068,5	1,3024	1,59
17	2.088,0	1,3132	1,59
18	2.069,0	1,3093	1,58
19	2.057,0	1,3086	1,57
20	2.077,0	1,3192	1,57
21			
22			
23	2.054,5	1,3131	1,56
24	2.070,0	1,3161	1,57
25	2.080,5	1,3206	1,58
26	2.081,0	1,3215	1,57
27	2.109,5	1,3229	1,59
28			
29			
30	2.098,0	1,3214	1,59



Last 24 months average €/Kg

Month	€/Kg
5/2010	1,65
6/2010	1,61
7/2010	1,57
8/2010	1,64
9/2010	1,68
10/2010	1,71
11/2010	1,73
12/2010	1,79
1/2011	1,84
2/2011	1,85
3/2011	1,85
4/2011	1,86
5/2011	1,81
6/2011	1,80
7/2011	1,78
8/2011	1,69
9/2011	1,69
10/2011	1,61
11/2011	1,54
12/2011	1,54
1/2012	1,69
2/2012	1,70
3/2012	1,69
4/2012	1,59

