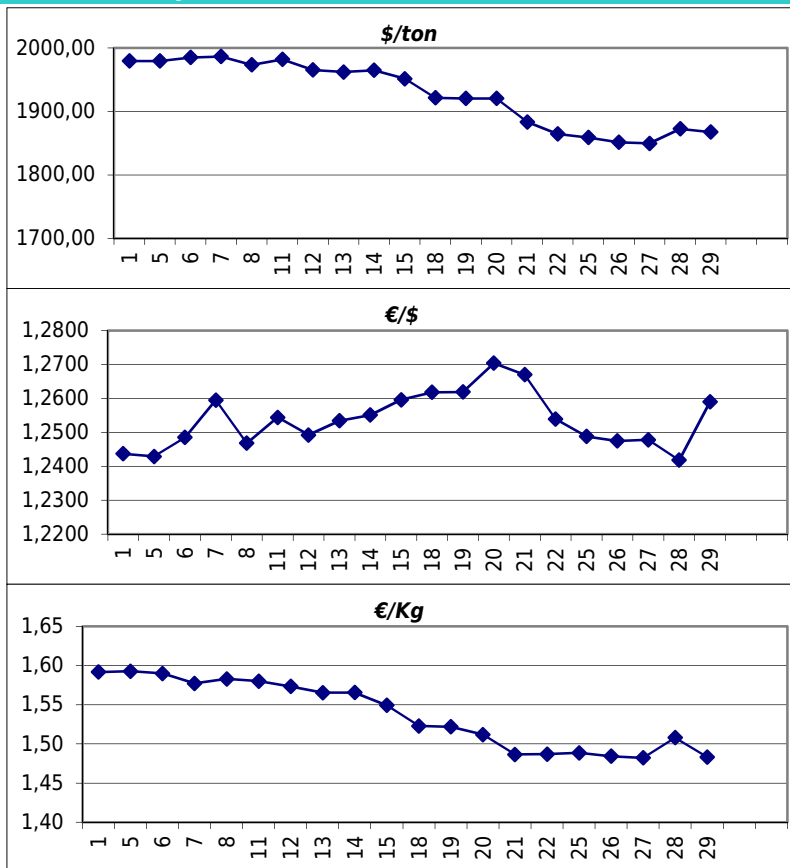


### Daily values for the year: 2012 month: 6

Day	\$/ton	€/€	€/Kg
1	1.979,5	1,2437	1,59
2			
3			
4			
5	1.979,5	1,2429	1,59
6	1.985,0	1,2485	1,59
7	1.986,5	1,2595	1,58
8	1.973,5	1,2468	1,58
9			
10			
11	1.982,0	1,2544	1,58
12	1.965,5	1,2492	1,57
13	1.962,0	1,2534	1,57
14	1.965,0	1,2551	1,57
15	1.951,5	1,2596	1,55
16			
17			
18	1.921,5	1,2618	1,52
19	1.920,5	1,2619	1,52
20	1.920,5	1,2704	1,51
21	1.883,5	1,2670	1,49
22	1.864,5	1,2539	1,49
23			
24			
25	1.859,0	1,2488	1,49
26	1.851,5	1,2475	1,48
27	1.849,5	1,2478	1,48
28	1.872,5	1,2418	1,51
29	1.867,5	1,2590	1,48
30			



### Last 24 months average €/Kg

Month	€/Kg
7/2010	1,57
8/2010	1,64
9/2010	1,68
10/2010	1,71
11/2010	1,73
12/2010	1,79
1/2011	1,84
2/2011	1,85
3/2011	1,85
4/2011	1,86
5/2011	1,81
6/2011	1,80
7/2011	1,78
8/2011	1,69
9/2011	1,69
10/2011	1,61
11/2011	1,54
12/2011	1,54
1/2012	1,69
2/2012	1,70
3/2012	1,69
4/2012	1,59
5/2012	1,60
6/2012	1,54

