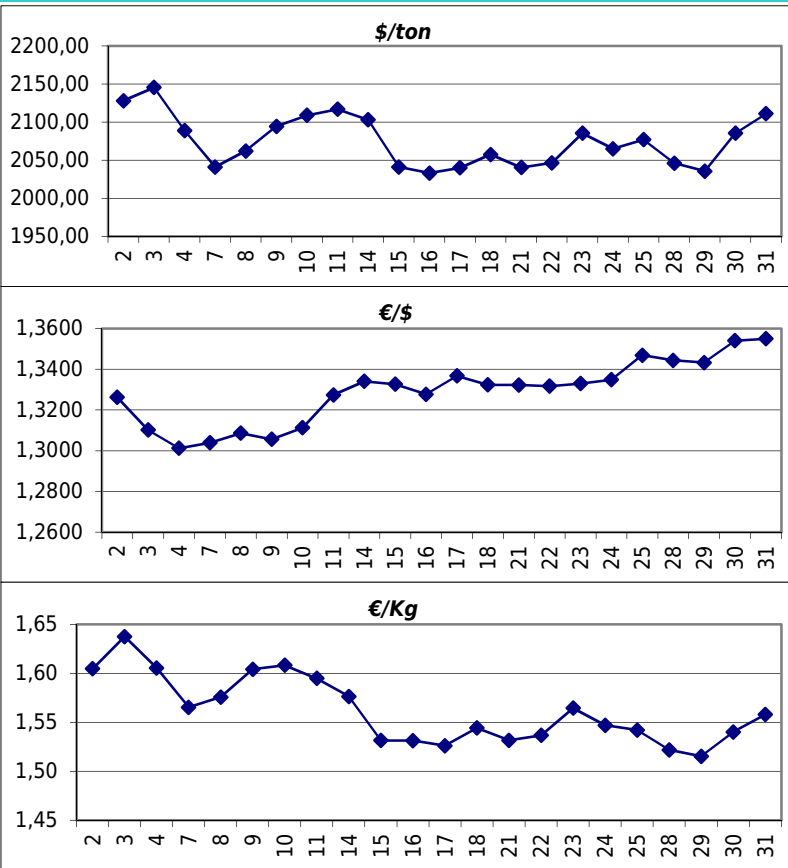


Daily values for the year: 2013 month: 1

Day	\$/ton	€/€	€/Kg
1			
2	2.128,0	1,3262	1,60
3	2.145,5	1,3102	1,64
4	2.089,0	1,3012	1,61
5			
6			
7	2.041,0	1,3039	1,57
8	2.062,0	1,3086	1,58
9	2.094,5	1,3056	1,60
10	2.109,0	1,3113	1,61
11	2.117,0	1,3274	1,59
12			
13			
14	2.103,0	1,3341	1,58
15	2.041,0	1,3327	1,53
16	2.033,0	1,3277	1,53
17	2.040,0	1,3368	1,53
18	2.057,5	1,3324	1,54
19			
20			
21	2.040,5	1,3323	1,53
22	2.046,5	1,3317	1,54
23	2.085,5	1,3330	1,56
24	2.065,0	1,3349	1,55
25	2.077,0	1,3469	1,54
26			
27			
28	2.046,0	1,3444	1,52
29	2.035,5	1,3433	1,52
30	2.085,5	1,3541	1,54
31	2.111,0	1,3550	1,56



Last 24 months average €/Kg

Month	€/Kg
2/2011	1,85
3/2011	1,85
4/2011	1,86
5/2011	1,81
6/2011	1,80
7/2011	1,78
8/2011	1,69
9/2011	1,69
10/2011	1,61
11/2011	1,54
12/2011	1,54
1/2012	1,69
2/2012	1,70
3/2012	1,69
4/2012	1,59
5/2012	1,60
6/2012	1,54
7/2012	1,55
8/2012	1,51
9/2012	1,61
10/2012	1,54
11/2012	1,53
12/2012	1,60
1/2013	1,56

