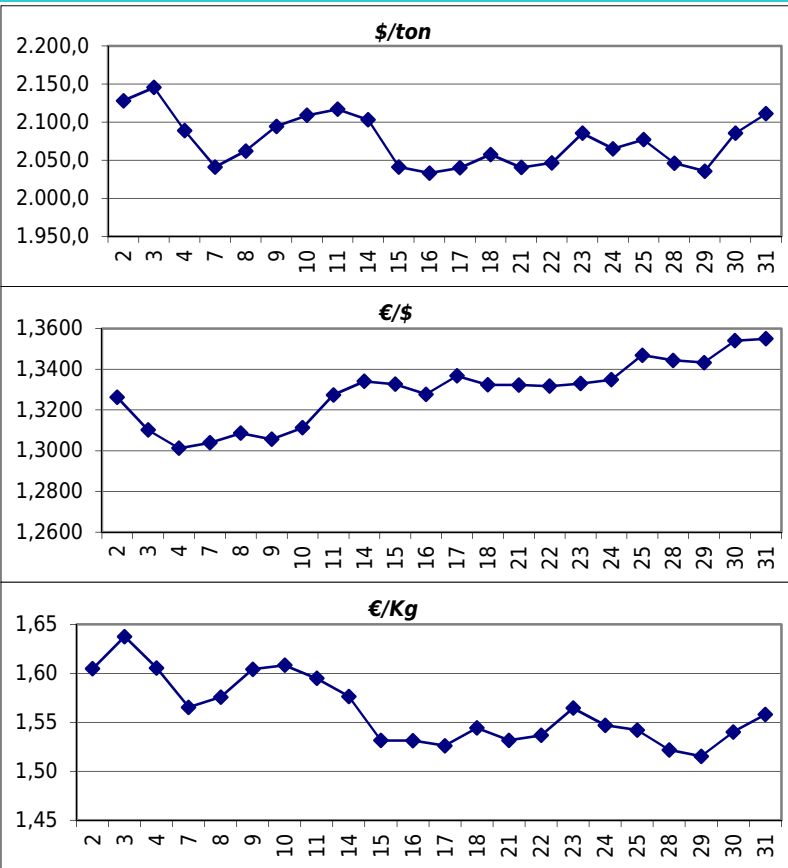


### Daily values for the year: 2013 month: 2

Day	\$/ton	€/\$	€/Kg
1	2.092,0	1,3644	1,53
2			
3			
4	2.118,0	1,3552	1,56
5	2.117,0	1,3537	1,56
6	2.095,5	1,3517	1,55
7	2.105,5	1,3546	1,55
8	2.105,5	1,3374	1,57
9			
10			
11	2.117,5	1,3391	1,58
12	2.100,5	1,3438	1,56
13	2.130,5	1,3480	1,58
14	2.160,0	1,3327	1,62
15	2.165,5	1,3325	1,63
16			
17			
18	2.131,0	1,3352	1,60
19	2.115,0	1,3349	1,58
20	2.110,0	1,3370	1,58
21	2.086,5	1,3186	1,58
22	2.065,0	1,3186	1,57
23			
24			
25	2.050,0	1,3304	1,54
26	2.014,5	1,3077	1,54
27	2.017,0	1,3097	1,54
28	2.005,0	1,3129	1,53



### Last 24 months average €/Kg

Month	€/Kg
3/2011	1,85
4/2011	1,86
5/2011	1,81
6/2011	1,80
7/2011	1,78
8/2011	1,69
9/2011	1,69
10/2011	1,61
11/2011	1,54
12/2011	1,54
1/2012	1,69
2/2012	1,70
3/2012	1,69
4/2012	1,59
5/2012	1,60
6/2012	1,54
7/2012	1,55
8/2012	1,51
9/2012	1,61
10/2012	1,54
11/2012	1,53
12/2012	1,60
1/2013	1,56
2/2013	1,57

