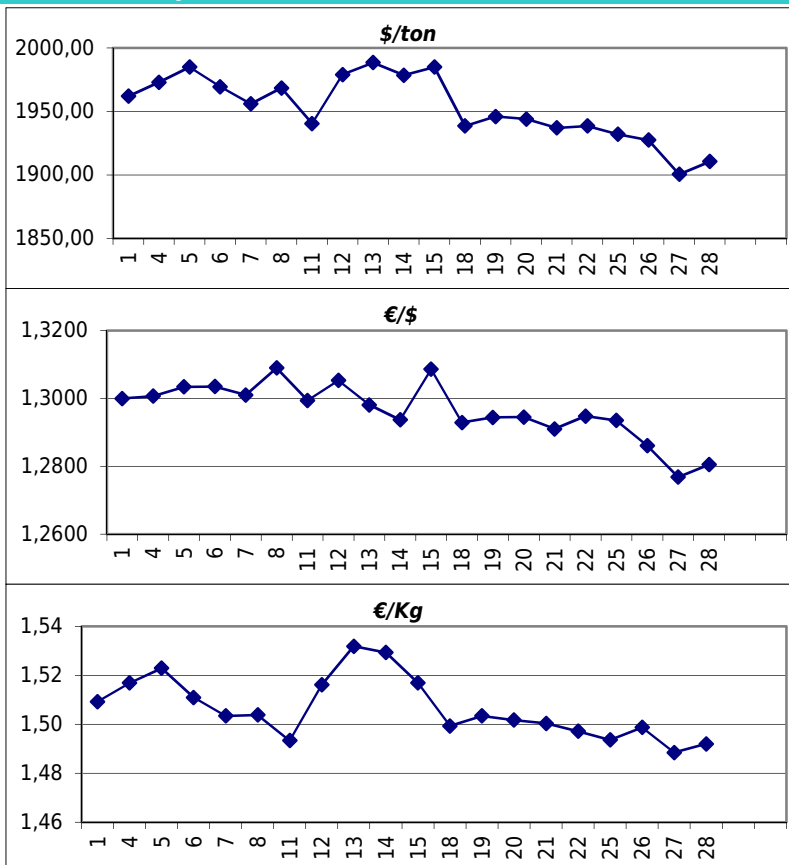


Daily values for the year: 2013 month: 3

Day	\$/ton	€/\$	€/Kg
1	1.962,0	1,3000	1,51
2			
3			
4	1.973,0	1,3007	1,52
5	1.985,0	1,3034	1,52
6	1.969,5	1,3035	1,51
7	1.956,0	1,3010	1,50
8	1.968,5	1,3090	1,50
9			
10			
11	1.940,5	1,2994	1,49
12	1.979,0	1,3053	1,52
13	1.988,5	1,2981	1,53
14	1.978,5	1,2937	1,53
15	1.985,0	1,3086	1,52
16			
17			
18	1.938,5	1,2929	1,50
19	1.946,0	1,2944	1,50
20	1.944,0	1,2945	1,50
21	1.937,0	1,2910	1,50
22	1.938,5	1,2948	1,50
23			
24			
25	1.932,0	1,2935	1,49
26	1.927,5	1,2861	1,50
27	1.900,5	1,2768	1,49
28	1.910,5	1,2805	1,49
29			
30			
31			



Last 24 months average €/Kg

Month	€/Kg
4/2011	1,86
5/2011	1,81
6/2011	1,80
7/2011	1,78
8/2011	1,69
9/2011	1,69
10/2011	1,61
11/2011	1,54
12/2011	1,54
1/2012	1,69
2/2012	1,70
3/2012	1,69
4/2012	1,59
5/2012	1,60
6/2012	1,54
7/2012	1,55
8/2012	1,51
9/2012	1,61
10/2012	1,54
11/2012	1,53
12/2012	1,60
1/2013	1,56
2/2013	1,57
3/2013	1,51

