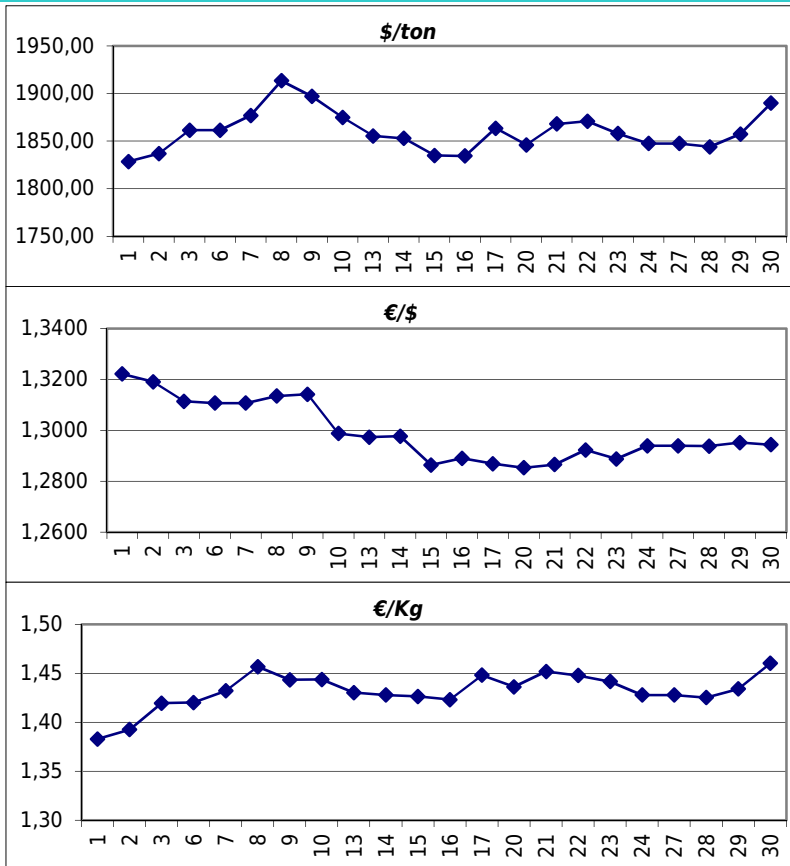


Daily values for the year: 2013 month: 5

Day	\$/ton	€/€	€/Kg
1	1.828,5	1,3222	1,38
2	1.837,0	1,3191	1,39
3	1.861,5	1,3114	1,42
4			
5			
6	1.861,5	1,3107	1,42
7	1.877,0	1,3107	1,43
8	1.913,5	1,3135	1,46
9	1.897,0	1,3142	1,44
10	1.875,0	1,2988	1,44
11			
12			
13	1.855,5	1,2973	1,43
14	1.853,0	1,2977	1,43
15	1.835,0	1,2864	1,43
16	1.834,5	1,2890	1,42
17	1.863,5	1,2869	1,45
18			
19			
20	1.846,0	1,2853	1,44
21	1.868,0	1,2866	1,45
22	1.871,0	1,2923	1,45
23	1.858,0	1,2888	1,44
24	1.847,5	1,2939	1,43
25			
26			
27	1.847,5	1,2939	1,43
28	1.844,0	1,2938	1,43
29	1.857,5	1,2952	1,43
30	1.890,0	1,2944	1,46
31	1.905,0	1,3006	1,46



Last 24 months average €/Kg

Month	€/Kg
6/2011	1,80
7/2011	1,78
8/2011	1,69
9/2011	1,69
10/2011	1,61
11/2011	1,54
12/2011	1,54
1/2012	1,69
2/2012	1,70
3/2012	1,69
4/2012	1,59
5/2012	1,60
6/2012	1,54
7/2012	1,55
8/2012	1,51
9/2012	1,61
10/2012	1,54
11/2012	1,53
12/2012	1,60
1/2013	1,56
2/2013	1,57
3/2013	1,51
4/2013	1,45
5/2013	1,43

