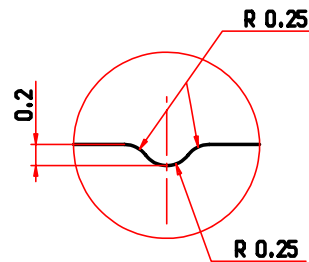
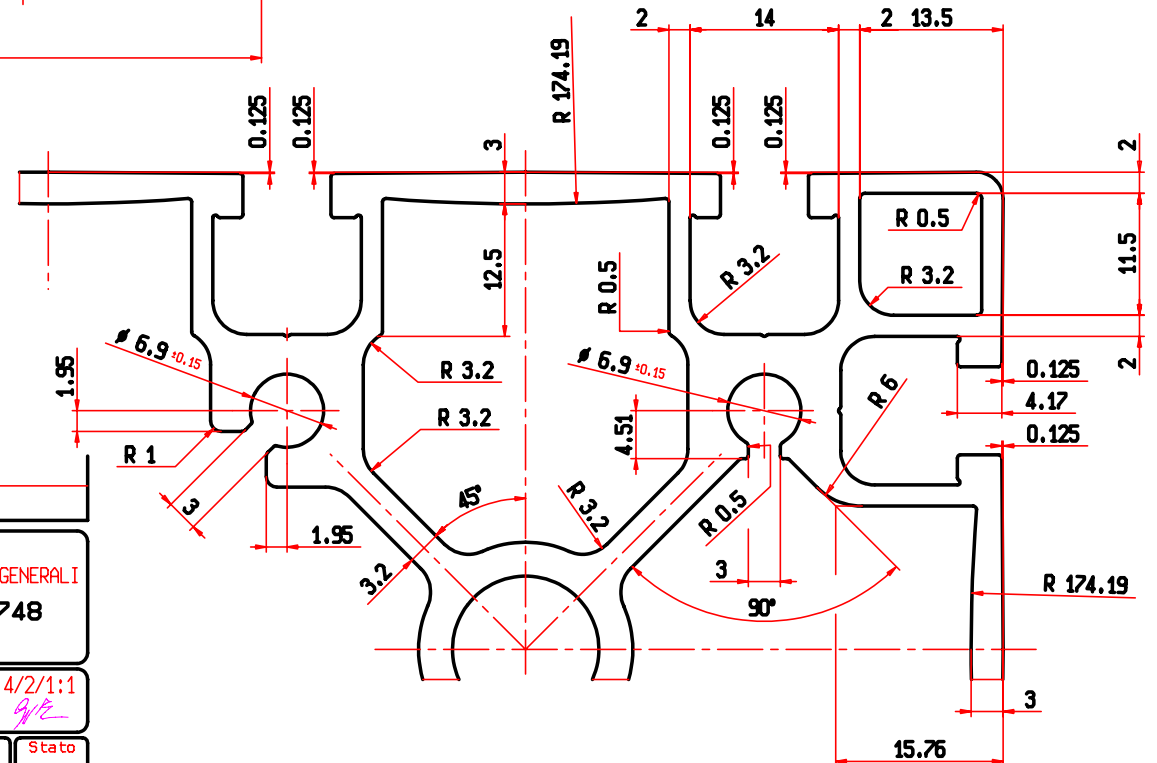


Jx = 317.2 cm4
 Jy = 1202 cm4
 Sx = 070.48 cm3
 Sy = 133.55 cm3

PERIMETRO EST. = 1004.7 mm.



N° 12 PART. "A"
 SCALA 20:1



- MODIF. TOLL. GENERALI (02/07/02 M.R.)

MODIFICHE

ACCOIPIAMENTI

EURAL

GNUTTI S.p.A.

EURAL GNUTTI S.p.A.
 Via S. Andrea, 3
 25038 ROVATO (BS)
 ITALY
 TELEPHONE
 +39.030.7725011
 FAX
 +39.030.7701228
 http://www.eural.com
 e-mail: dies@eural.it

Spigoli con ● = R ---
 Spigoli non quotati = R 0.3
 Du/Smin= 87

TOLLERANZE GENERALI
 DIN 1748

sez. mm 3707
 g./ml. 10011
 ø c. cir. 199
 tipo C-C

Data 30/04/02 scala 4/2/1:1

Dis. M.R. Contr. *[Signature]*

N° matricola Lega Stato
 020407 6060

COMPANY WITH QUALITY SYSTEM CERTIFIED BY DNV
 ISO 9002