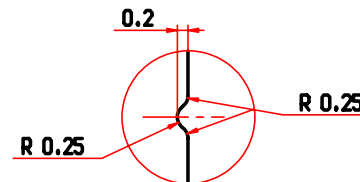
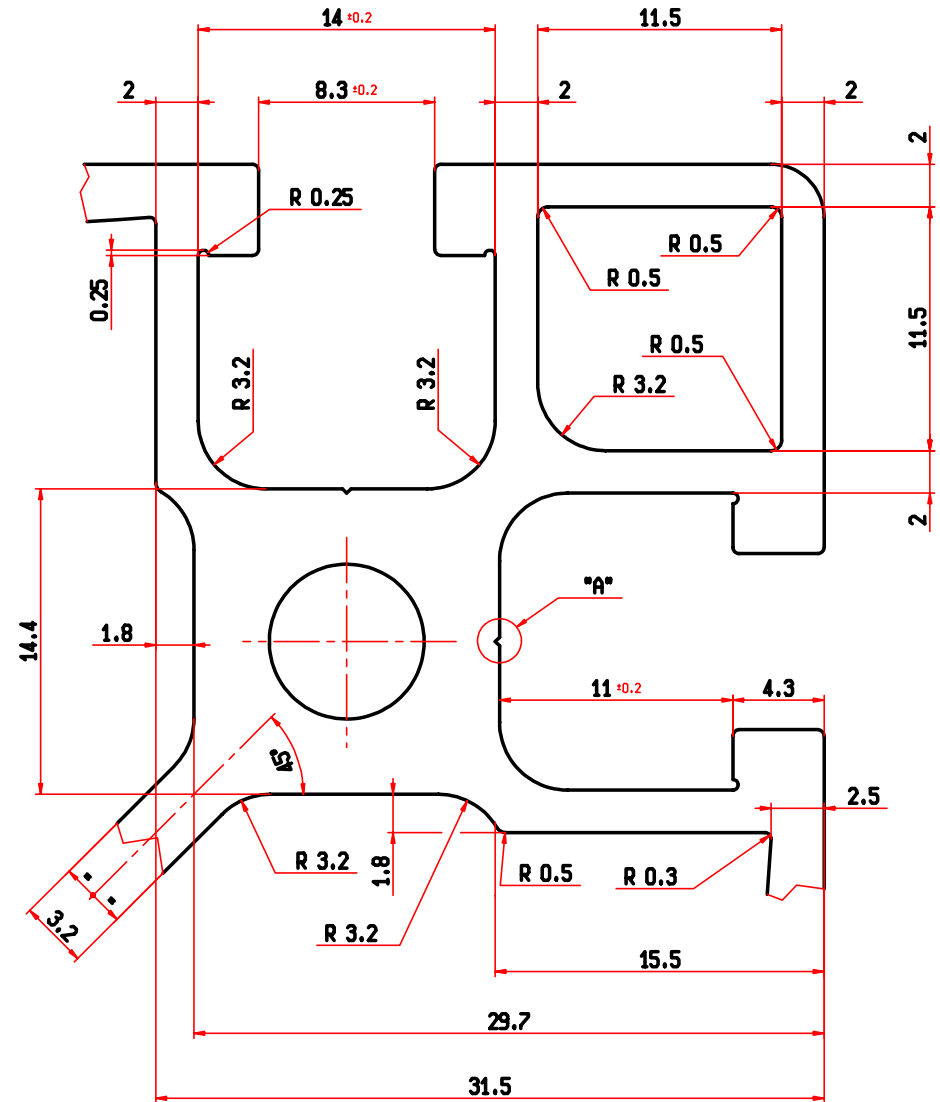


Area= 2227.78 cm²
 Jx= 175.06 cm⁴
 Jy= 175.06 cm⁴
 Sx= 38.90 cm³
 Sy= 38.90 cm³
 Ip= 513.64 cm⁴



PARTICOLARE X 4

N.° 6 PART. "A"

SCALA 10:1

MODIFICHE

ACCOIPIAMENTI

EURAL

GNUTTI S.p.A.

COMPANY WITH QUALITY SYSTEM CERTIFIED BY DNV ISO 9002

EURAL GNUTTI S.p.A.
 Via S.Andrea,3
 25038 ROVATO (BS)
 ITALY
 TELEPHONE
 +39.030.7725011
 FAX
 +39.030.7701228
 http://www.eural.com
 e-mail:dies@eural.it

Spigoli con ● = R.
 Spigoli non quotati = R0.3
 Du/Smin=63

TOLLERANZE GENERALI
 DIN 1748

sez. mm 2227
 g./ml. 6014
 ø c. cir. 125
 tipo C-C

Data 25/11/00 scala 4/1:1
 Dis. M.R. Contr.

N° matricola Lega
 001161 6060