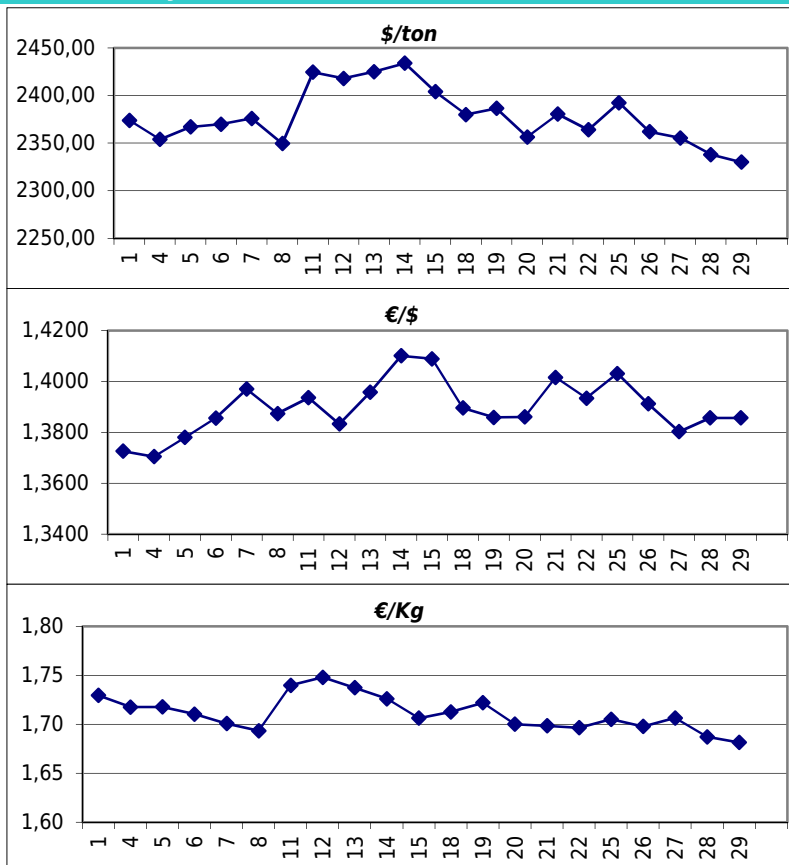


Daily values for the year: 2010 month: 10

Day	\$/ton	€/€	€/Kg
1	2.374,0	1,3726	1,73
2			
3			
4	2.354,0	1,3705	1,72
5	2.367,0	1,3780	1,72
6	2.370,0	1,3856	1,71
7	2.376,0	1,3970	1,70
8	2.349,5	1,3874	1,69
9			
10			
11	2.424,5	1,3936	1,74
12	2.418,0	1,3833	1,75
13	2.425,0	1,3958	1,74
14	2.434,0	1,4101	1,73
15	2.404,0	1,4089	1,71
16			
17			
18	2.380,0	1,3896	1,71
19	2.386,5	1,3859	1,72
20	2.356,5	1,3861	1,70
21	2.380,5	1,4016	1,70
22	2.364,0	1,3934	1,70
23			
24			
25	2.392,5	1,4031	1,71
26	2.362,0	1,3912	1,70
27	2.355,5	1,3803	1,71
28	2.338,0	1,3857	1,69
29	2.330,0	1,3857	1,68
30			
31			



Last 24 months average €/Kg

Month	€/Kg
11/2008	1,50
12/2008	1,15
1/2009	1,09
2/2009	1,07
3/2009	1,05
4/2009	1,11
5/2009	1,10
6/2009	1,15
7/2009	1,20
8/2009	1,38
9/2009	1,28
10/2009	1,29
11/2009	1,33
12/2009	1,51
1/2010	1,59
2/2010	1,52
3/2010	1,65
4/2010	1,75
5/2010	1,65
6/2010	1,61
7/2010	1,57
8/2010	1,64
9/2010	1,68
10/2010	1,71

