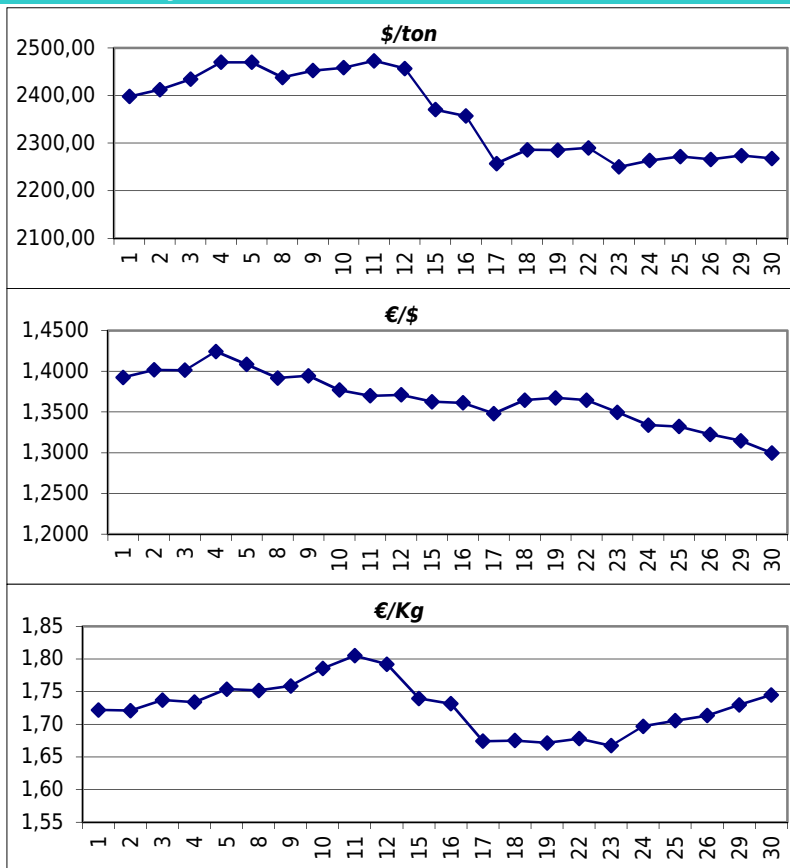


Daily values for the year: 2010 month: 11

Day	\$/ton	€/\$	€/Kg
1	2.398,0	1,3926	1,72
2	2.412,5	1,4018	1,72
3	2.434,5	1,4014	1,74
4	2.470,0	1,4244	1,73
5	2.470,0	1,4084	1,75
6			
7			
8	2.438,0	1,3917	1,75
9	2.452,5	1,3945	1,76
10	2.458,5	1,3770	1,79
11	2.473,0	1,3700	1,81
12	2.457,0	1,3711	1,79
13			
14			
15	2.370,5	1,3626	1,74
16	2.357,0	1,3612	1,73
17	2.257,0	1,3481	1,67
18	2.286,0	1,3647	1,68
19	2.285,5	1,3674	1,67
20			
21			
22	2.290,0	1,3647	1,68
23	2.250,0	1,3496	1,67
24	2.263,5	1,3339	1,70
25	2.272,0	1,3321	1,71
26	2.266,0	1,3225	1,71
27			
28			
29	2.274,0	1,3146	1,73
30	2.268,0	1,2998	1,74



Last 24 months average €/Kg

Month	€/Kg
12/2008	1,15
1/2009	1,09
2/2009	1,07
3/2009	1,05
4/2009	1,11
5/2009	1,10
6/2009	1,15
7/2009	1,20
8/2009	1,38
9/2009	1,28
10/2009	1,29
11/2009	1,33
12/2009	1,51
1/2010	1,59
2/2010	1,52
3/2010	1,65
4/2010	1,75
5/2010	1,65
6/2010	1,61
7/2010	1,57
8/2010	1,64
9/2010	1,68
10/2010	1,71
11/2010	1,73

