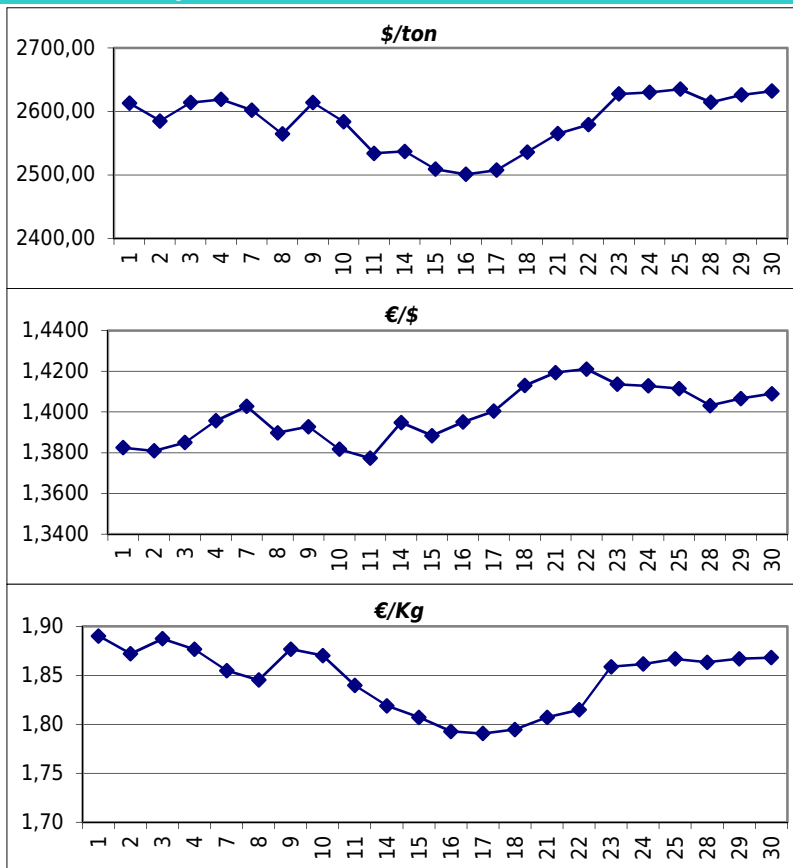


### Daily values for the year: 2011 month: 3

Day	\$/ton	€/€	€/Kg
1	2.613,0	1,3825	1,89
2	2.585,0	1,3809	1,87
3	2.614,0	1,3850	1,89
4	2.619,0	1,3957	1,88
5			
6			
7	2.602,0	1,4028	1,85
8	2.564,5	1,3898	1,85
9	2.614,0	1,3928	1,88
10	2.584,0	1,3817	1,87
11	2.534,0	1,3773	1,84
12			
13			
14	2.537,0	1,3948	1,82
15	2.509,0	1,3884	1,81
16	2.501,0	1,3951	1,79
17	2.507,5	1,4004	1,79
18	2.536,0	1,4130	1,79
19			
20			
21	2.565,0	1,4194	1,81
22	2.579,0	1,4211	1,81
23	2.627,5	1,4136	1,86
24	2.630,0	1,4128	1,86
25	2.635,0	1,4115	1,87
26			
27			
28	2.614,5	1,4032	1,86
29	2.626,0	1,4066	1,87
30	2.632,0	1,4090	1,87
31	2.632,0	1,4207	1,85



### Last 24 months average €/Kg

Month	€/Kg
4/2009	1,11
5/2009	1,10
6/2009	1,15
7/2009	1,20
8/2009	1,38
9/2009	1,28
10/2009	1,29
11/2009	1,33
12/2009	1,51
1/2010	1,59
2/2010	1,52
3/2010	1,65
4/2010	1,75
5/2010	1,65
6/2010	1,61
7/2010	1,57
8/2010	1,64
9/2010	1,68
10/2010	1,71
11/2010	1,73
12/2010	1,79
1/2011	1,84
2/2011	1,85
3/2011	1,85

