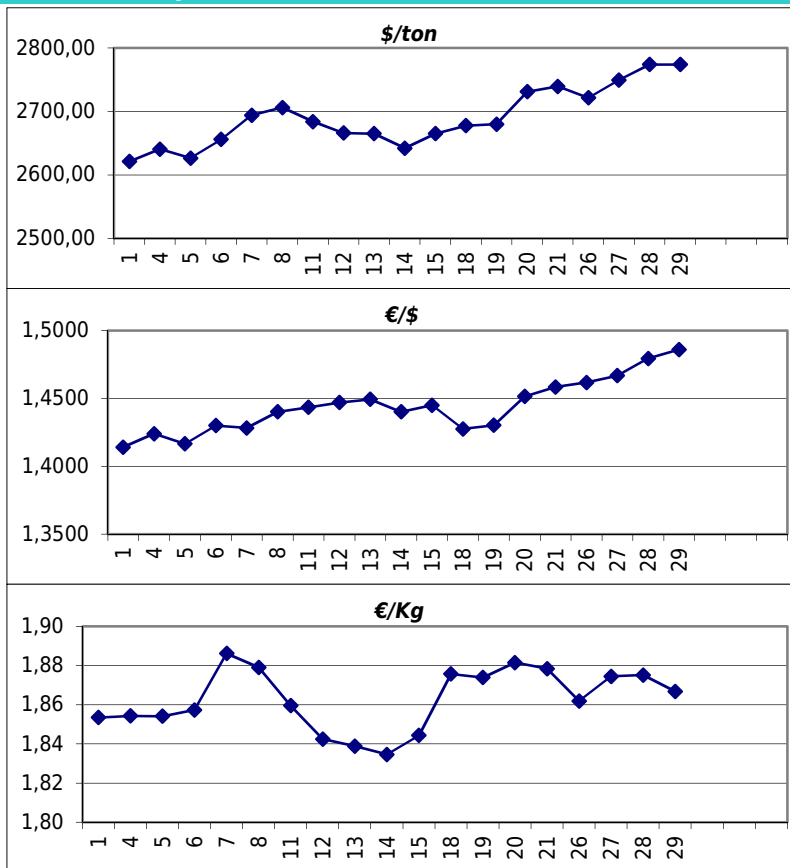


Daily values for the year: 2011 month: 4

Day	\$/ton	€/€	€/Kg
1	2.621,0	1,4141	1,85
2			
3			
4	2.640,5	1,4240	1,85
5	2.626,5	1,4166	1,85
6	2.656,0	1,4300	1,86
7	2.694,0	1,4283	1,89
8	2.706,0	1,4401	1,88
9			
10			
11	2.684,0	1,4434	1,86
12	2.666,0	1,4470	1,84
13	2.665,0	1,4493	1,84
14	2.642,0	1,4401	1,83
15	2.665,0	1,4450	1,84
16			
17			
18	2.677,5	1,4275	1,88
19	2.680,0	1,4302	1,87
20	2.731,0	1,4515	1,88
21	2.739,5	1,4584	1,88
22			
23			
24			
25			
26	2.721,5	1,4617	1,86
27	2.749,5	1,4668	1,87
28	2.774,0	1,4794	1,88
29	2.774,0	1,4860	1,87
30			



Last 24 months average €/Kg

Month	€/Kg
5/2009	1,10
6/2009	1,15
7/2009	1,20
8/2009	1,38
9/2009	1,28
10/2009	1,29
11/2009	1,38
12/2009	1,51
1/2010	1,59
2/2010	1,52
3/2010	1,65
4/2010	1,75
5/2010	1,65
6/2010	1,61
7/2010	1,57
8/2010	1,64
9/2010	1,68
10/2010	1,71
11/2010	1,73
12/2010	1,79
1/2011	1,84
2/2011	1,85
3/2011	1,85
4/2011	1,86

