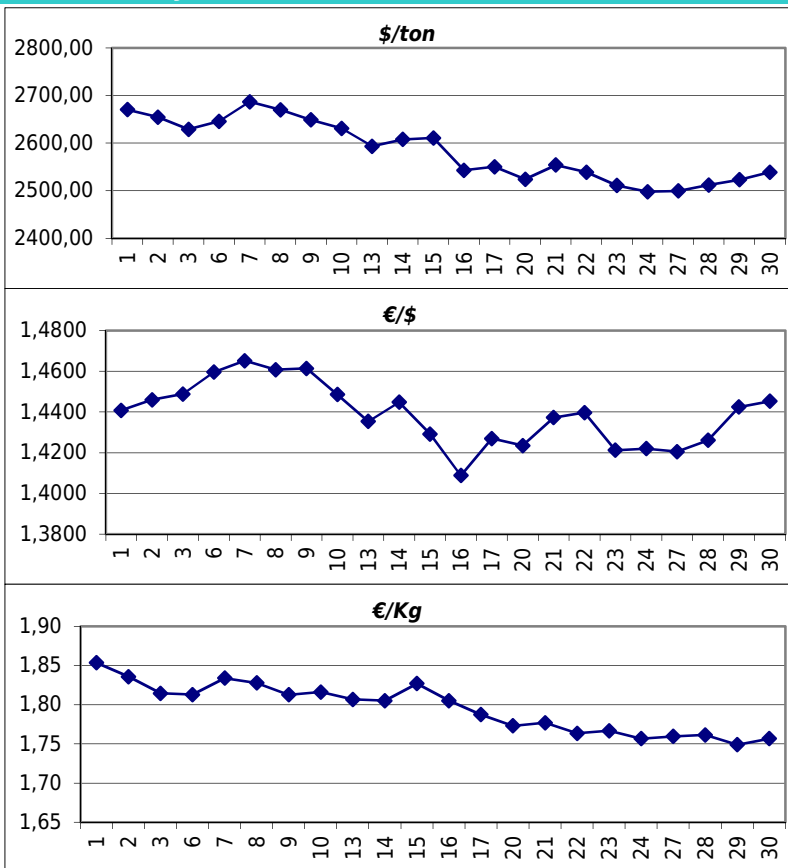


Daily values for the year: 2011 month: 6

Day	\$/ton	€/€	€/Kg
1	2.670,5	1,4408	1,85
2	2.654,5	1,4460	1,84
3	2.629,0	1,4488	1,81
4			
5			
6	2.646,0	1,4596	1,81
7	2.687,0	1,4652	1,83
8	2.670,0	1,4608	1,83
9	2.649,0	1,4614	1,81
10	2.631,0	1,4486	1,82
11			
12			
13	2.593,5	1,4354	1,81
14	2.608,0	1,4448	1,81
15	2.611,0	1,4292	1,83
16	2.543,0	1,4088	1,81
17	2.550,5	1,4270	1,79
18			
19			
20	2.524,0	1,4235	1,77
21	2.554,0	1,4373	1,78
22	2.539,0	1,4397	1,76
23	2.511,0	1,4212	1,77
24	2.498,0	1,4220	1,76
25			
26			
27	2.499,5	1,4205	1,76
28	2.512,0	1,4261	1,76
29	2.523,0	1,4425	1,75
30	2.539,0	1,4453	1,76



Last 24 months average €/Kg

Month	€/Kg
7/2009	1,20
8/2009	1,38
9/2009	1,28
10/2009	1,29
11/2009	1,33
12/2009	1,51
1/2010	1,59
2/2010	1,52
3/2010	1,65
4/2010	1,75
5/2010	1,65
6/2010	1,61
7/2010	1,57
8/2010	1,64
9/2010	1,68
10/2010	1,71
11/2010	1,73
12/2010	1,79
1/2011	1,84
2/2011	1,85
3/2011	1,85
4/2011	1,86
5/2011	1,81
6/2011	1,80

