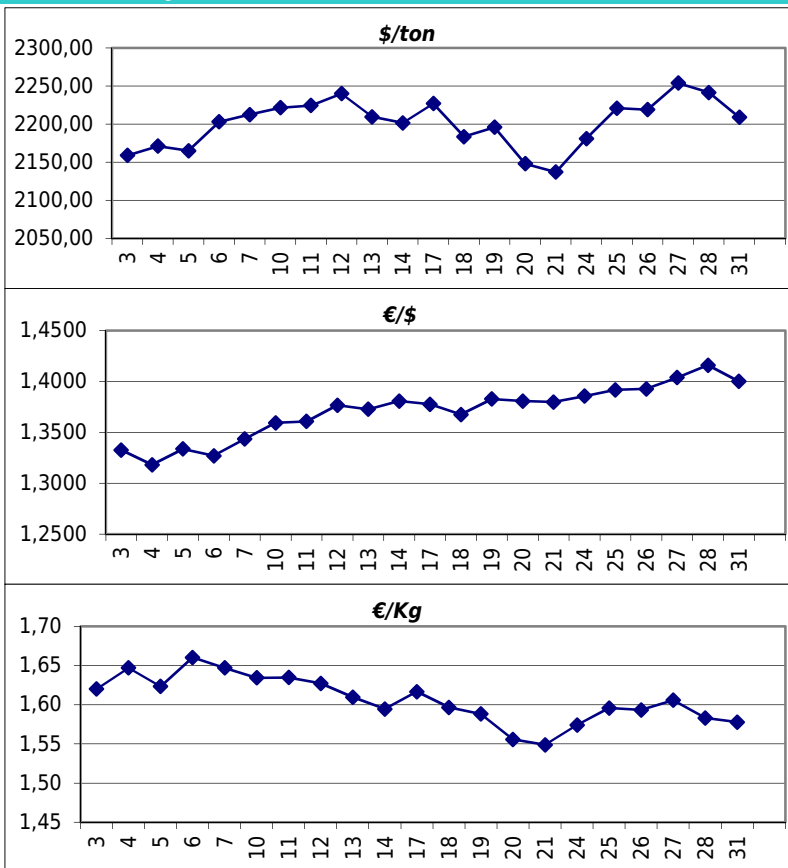


Daily values for the year: 2011 month: 10

Day	\$/ton	€/€	€/Kg
1			
2			
3	2.159,0	1,3327	1,62
4	2.171,0	1,3181	1,65
5	2.165,0	1,3337	1,62
6	2.203,0	1,3269	1,66
7	2.212,5	1,3434	1,65
8			
9			
10	2.221,5	1,3593	1,63
11	2.224,5	1,3607	1,63
12	2.240,0	1,3766	1,63
13	2.209,5	1,3727	1,61
14	2.201,5	1,3807	1,59
15			
16			
17	2.227,0	1,3776	1,62
18	2.183,5	1,3676	1,60
19	2.196,0	1,3828	1,59
20	2.148,0	1,3807	1,56
21	2.137,0	1,3798	1,55
22			
23			
24	2.181,0	1,3856	1,57
25	2.221,0	1,3918	1,60
26	2.219,0	1,3927	1,59
27	2.254,0	1,4038	1,61
28	2.241,5	1,4160	1,58
29			
30			
31	2.209,0	1,4001	1,58



Last 24 months average €/Kg

Month	€/Kg
11/2009	1,33
12/2009	1,51
1/2010	1,59
2/2010	1,52
3/2010	1,65
4/2010	1,75
5/2010	1,65
6/2010	1,61
7/2010	1,57
8/2010	1,64
9/2010	1,68
10/2010	1,71
11/2010	1,73
12/2010	1,79
1/2011	1,84
2/2011	1,85
3/2011	1,85
4/2011	1,86
5/2011	1,81
6/2011	1,80
7/2011	1,78
8/2011	1,69
9/2011	1,69
10/2011	1,61

