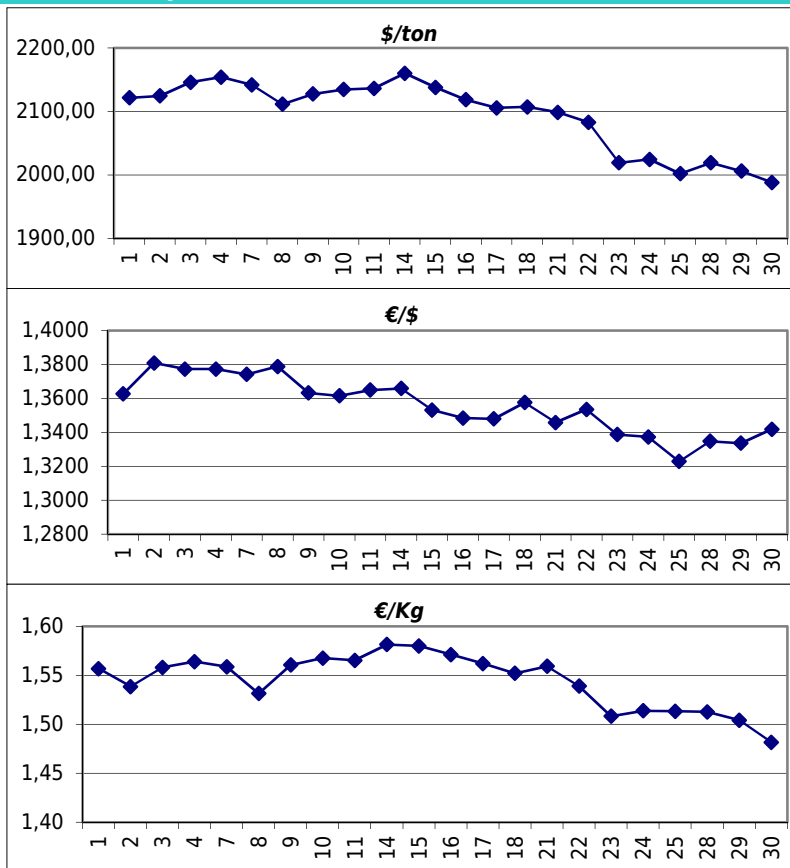


### Daily values for the year: 2011 month: 11

Day	\$/ton	€/€	€/Kg
1	2.121,5	1,3627	1,56
2	2.124,5	1,3809	1,54
3	2.146,0	1,3773	1,56
4	2.154,0	1,3773	1,56
5			
6			
7	2.142,0	1,3742	1,56
8	2.111,5	1,3788	1,53
9	2.127,5	1,3633	1,56
10	2.134,5	1,3616	1,57
11	2.136,5	1,3650	1,57
12			
13			
14	2.160,0	1,3659	1,58
15	2.138,0	1,3532	1,58
16	2.118,5	1,3484	1,57
17	2.105,5	1,3480	1,56
18	2.107,0	1,3576	1,55
19			
20			
21	2.098,5	1,3458	1,56
22	2.083,0	1,3535	1,54
23	2.019,0	1,3387	1,51
24	2.024,5	1,3373	1,51
25	2.002,0	1,3229	1,51
26			
27			
28	2.019,0	1,3348	1,51
29	2.006,0	1,3336	1,50
30	1.988,0	1,3418	1,48



### Last 24 months average €/Kg

Month	€/Kg
12/2009	1,51
1/2010	1,59
2/2010	1,52
3/2010	1,65
4/2010	1,75
5/2010	1,65
6/2010	1,61
7/2010	1,57
8/2010	1,64
9/2010	1,68
10/2010	1,71
11/2010	1,73
12/2010	1,79
1/2011	1,84
2/2011	1,85
3/2011	1,85
4/2011	1,86
5/2011	1,81
6/2011	1,80
7/2011	1,78
8/2011	1,69
9/2011	1,69
10/2011	1,61
11/2011	1,54

