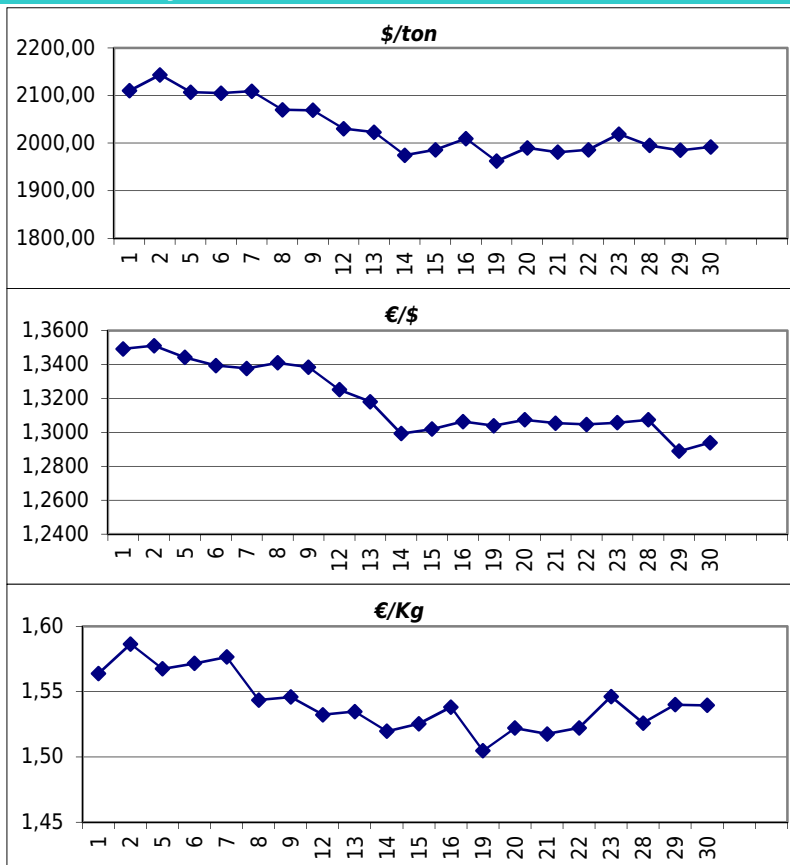


Daily values for the year: 2011 month: 12

Day	\$/ton	€/€	€/Kg
1	2.110,0	1,3492	1,56
2	2.143,5	1,3511	1,59
3			
4			
5	2.107,0	1,3442	1,57
6	2.105,0	1,3394	1,57
7	2.109,0	1,3377	1,58
8	2.070,0	1,3410	1,54
9	2.069,0	1,3384	1,55
10			
11			
12	2.030,5	1,3251	1,53
13	2.023,0	1,3181	1,53
14	1.974,5	1,2993	1,52
15	1.986,0	1,3019	1,53
16	2.009,5	1,3064	1,54
17			
18			
19	1.962,0	1,3039	1,50
20	1.990,0	1,3074	1,52
21	1.981,0	1,3054	1,52
22	1.986,0	1,3047	1,52
23	2.019,0	1,3057	1,55
24			
25			
26			
27			
28	1.995,0	1,3074	1,53
29	1.985,0	1,2889	1,54
30	1.992,0	1,2939	1,54
31			



Last 24 months average €/Kg

Month	€/Kg
1/2010	1,59
2/2010	1,52
3/2010	1,65
4/2010	1,75
5/2010	1,65
6/2010	1,61
7/2010	1,57
8/2010	1,64
9/2010	1,68
10/2010	1,71
11/2010	1,73
12/2010	1,79
1/2011	1,84
2/2011	1,85
3/2011	1,85
4/2011	1,86
5/2011	1,81
6/2011	1,80
7/2011	1,78
8/2011	1,69
9/2011	1,69
10/2011	1,61
11/2011	1,54
12/2011	1,54

