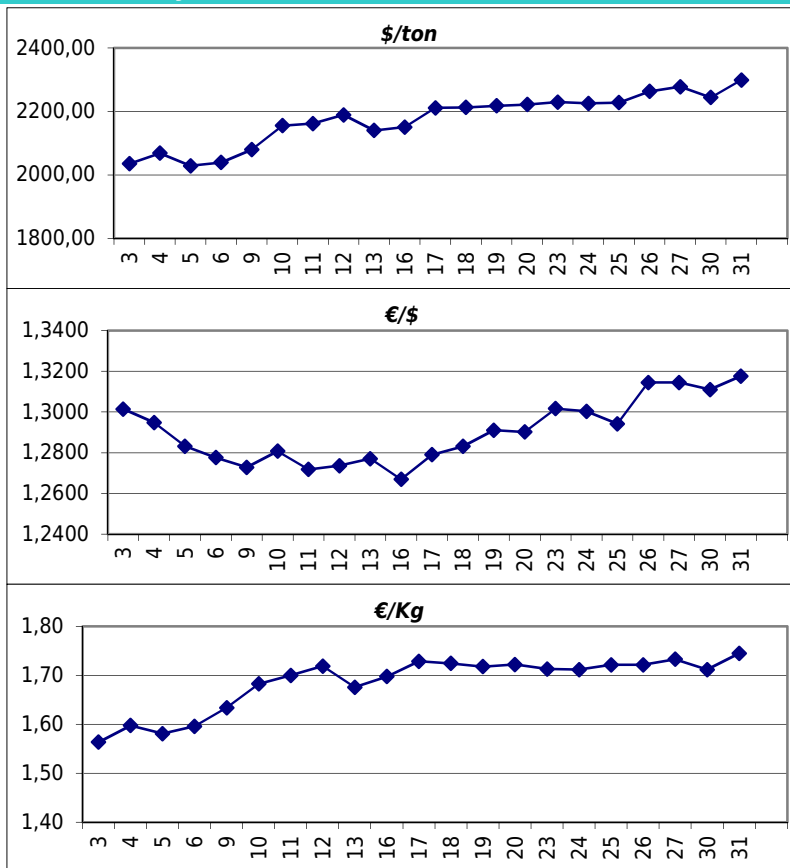


### Daily values for the year: 2012 month: 1

Day	\$/ton	€//\$	€/Kg
1			
2			
3	2.035,0	1,3014	1,56
4	2.068,5	1,2948	1,60
5	2.028,5	1,2832	1,58
6	2.039,0	1,2776	1,60
7			
8			
9	2.079,5	1,2728	1,63
10	2.155,0	1,2808	1,68
11	2.162,0	1,2718	1,70
12	2.189,0	1,2736	1,72
13	2.140,0	1,2771	1,68
14			
15			
16	2.150,5	1,2669	1,70
17	2.211,0	1,2790	1,73
18	2.212,5	1,2831	1,72
19	2.218,0	1,2911	1,72
20	2.222,0	1,2902	1,72
21			
22			
23	2.229,5	1,3017	1,71
24	2.225,5	1,3003	1,71
25	2.228,0	1,2942	1,72
26	2.263,0	1,3145	1,72
27	2.278,0	1,3145	1,73
28			
29			
30	2.244,0	1,3110	1,71
31	2.299,0	1,3176	1,74



### Last 24 months average €/Kg

Month	€/Kg
2/2010	1,52
3/2010	1,65
4/2010	1,75
5/2010	1,65
6/2010	1,61
7/2010	1,57
8/2010	1,64
9/2010	1,68
10/2010	1,71
11/2010	1,73
12/2010	1,79
1/2011	1,84
2/2011	1,85
3/2011	1,85
4/2011	1,86
5/2011	1,81
6/2011	1,80
7/2011	1,78
8/2011	1,69
9/2011	1,69
10/2011	1,61
11/2011	1,54
12/2011	1,54
1/2012	1,69

