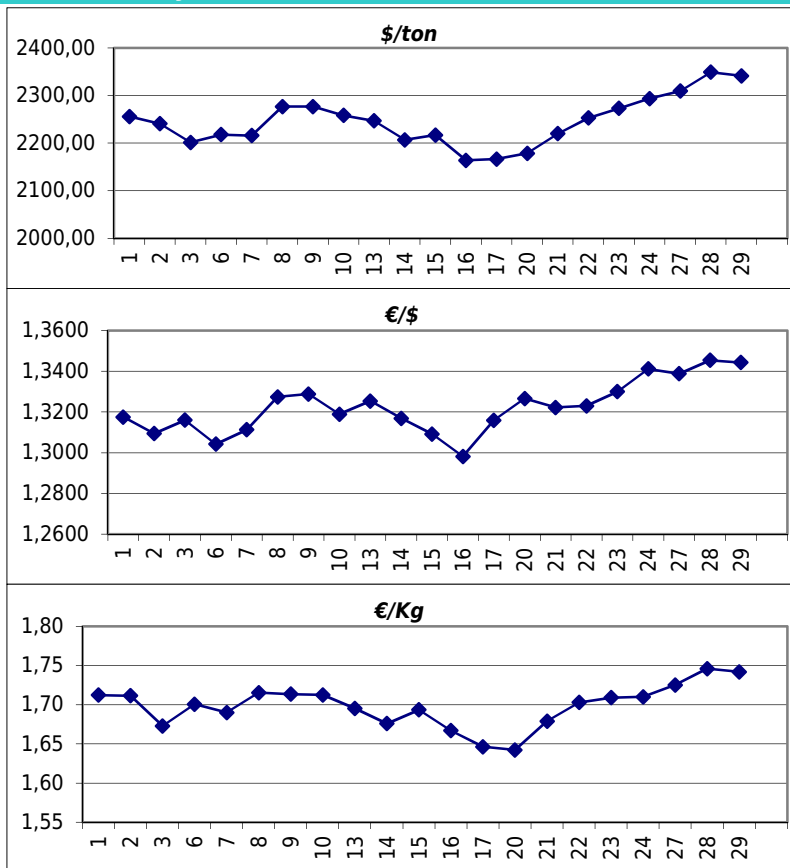


Daily values for the year: 2012 month: 2

Day	\$/ton	€/€	€/Kg
1	2.256,0	1,3175	1,71
2	2.241,0	1,3094	1,71
3	2.201,5	1,3160	1,67
4			
5			
6	2.218,0	1,3042	1,70
7	2.216,0	1,3113	1,69
8	2.277,0	1,3274	1,72
9	2.277,0	1,3288	1,71
10	2.258,5	1,3189	1,71
11			
12			
13	2.247,0	1,3254	1,70
14	2.207,0	1,3169	1,68
15	2.217,0	1,3092	1,69
16	2.164,0	1,2982	1,67
17	2.166,5	1,3159	1,65
18			
19			
20	2.178,5	1,3266	1,64
21	2.220,0	1,3222	1,68
22	2.253,0	1,3230	1,70
23	2.273,0	1,3300	1,71
24	2.293,5	1,3412	1,71
25			
26			
27	2.309,5	1,3388	1,73
28	2.349,0	1,3454	1,75
29	2.341,5	1,3443	1,74



Last 24 months average €/Kg

Month	€/Kg
3/2010	1,65
4/2010	1,75
5/2010	1,65
6/2010	1,61
7/2010	1,57
8/2010	1,64
9/2010	1,68
10/2010	1,71
11/2010	1,73
12/2010	1,79
1/2011	1,84
2/2011	1,85
3/2011	1,85
4/2011	1,86
5/2011	1,81
6/2011	1,80
7/2011	1,78
8/2011	1,69
9/2011	1,69
10/2011	1,61
11/2011	1,54
12/2011	1,54
1/2012	1,69
2/2012	1,70

