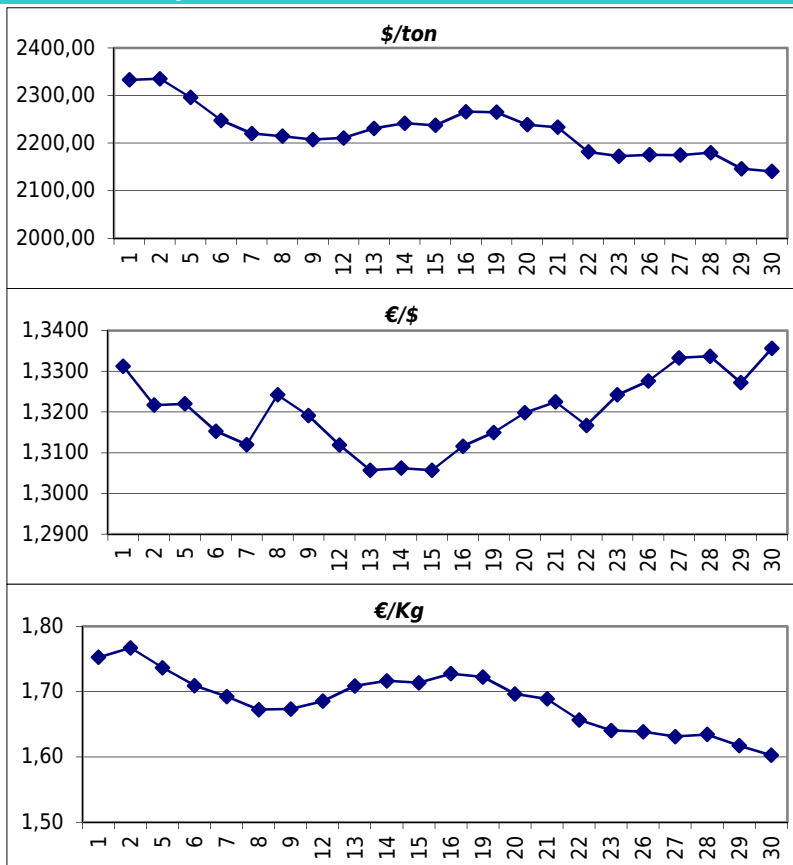


Daily values for the year: 2012 month: 3

Day	\$/ton	€/€	€/Kg
1	2.333,0	1,3312	1,75
2	2.335,5	1,3217	1,77
3			
4			
5	2.296,0	1,3220	1,74
6	2.248,0	1,3153	1,71
7	2.220,5	1,3120	1,69
8	2.214,5	1,3242	1,67
9	2.207,5	1,3191	1,67
10			
11			
12	2.211,0	1,3119	1,69
13	2.231,0	1,3057	1,71
14	2.242,0	1,3062	1,72
15	2.237,5	1,3057	1,71
16	2.266,0	1,3116	1,73
17			
18			
19	2.265,0	1,3150	1,72
20	2.239,0	1,3198	1,70
21	2.233,5	1,3225	1,69
22	2.181,5	1,3167	1,66
23	2.172,5	1,3242	1,64
24			
25			
26	2.175,5	1,3276	1,64
27	2.175,0	1,3333	1,63
28	2.180,0	1,3337	1,63
29	2.146,5	1,3272	1,62
30	2.140,5	1,3356	1,60
31			



Last 24 months average €/Kg

Month	€/Kg
4/2010	1,75
5/2010	1,65
6/2010	1,61
7/2010	1,57
8/2010	1,64
9/2010	1,68
10/2010	1,71
11/2010	1,73
12/2010	1,79
1/2011	1,84
2/2011	1,85
3/2011	1,85
4/2011	1,86
5/2011	1,81
6/2011	1,80
7/2011	1,78
8/2011	1,69
9/2011	1,69
10/2011	1,61
11/2011	1,54
12/2011	1,54
1/2012	1,69
2/2012	1,70
3/2012	1,69

