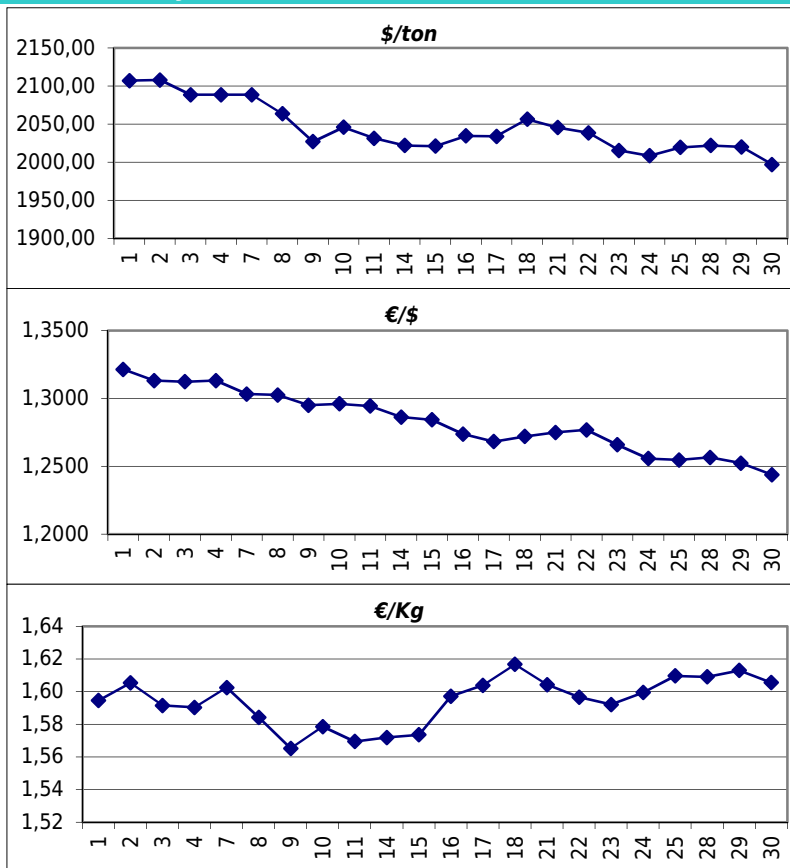


Daily values for the year: 2012 month: 5

Day	\$/ton	€/€	€/Kg
1	2.107,0	1,3214	1,59
2	2.108,0	1,3131	1,61
3	2.088,5	1,3123	1,59
4	2.088,5	1,3132	1,59
5			
6			
7	2.088,5	1,3033	1,60
8	2.063,5	1,3025	1,58
9	2.027,0	1,2950	1,57
10	2.046,0	1,2961	1,58
11	2.031,5	1,2944	1,57
12			
13			
14	2.022,0	1,2863	1,57
15	2.021,0	1,2843	1,57
16	2.034,5	1,2738	1,60
17	2.034,0	1,2682	1,60
18	2.056,5	1,2720	1,62
19			
20			
21	2.045,5	1,2750	1,60
22	2.038,5	1,2768	1,60
23	2.015,5	1,2659	1,59
24	2.008,5	1,2557	1,60
25	2.019,5	1,2546	1,61
26			
27			
28	2.022,0	1,2566	1,61
29	2.020,0	1,2523	1,61
30	1.997,0	1,2438	1,61
31	2.014,0	1,2403	1,62



Last 24 months average €/Kg

Month	€/Kg
6/2010	1,61
7/2010	1,57
8/2010	1,64
9/2010	1,68
10/2010	1,71
11/2010	1,73
12/2010	1,79
1/2011	1,84
2/2011	1,85
3/2011	1,85
4/2011	1,86
5/2011	1,81
6/2011	1,80
7/2011	1,78
8/2011	1,69
9/2011	1,69
10/2011	1,61
11/2011	1,54
12/2011	1,54
1/2012	1,69
2/2012	1,70
3/2012	1,69
4/2012	1,59
5/2012	1,60

