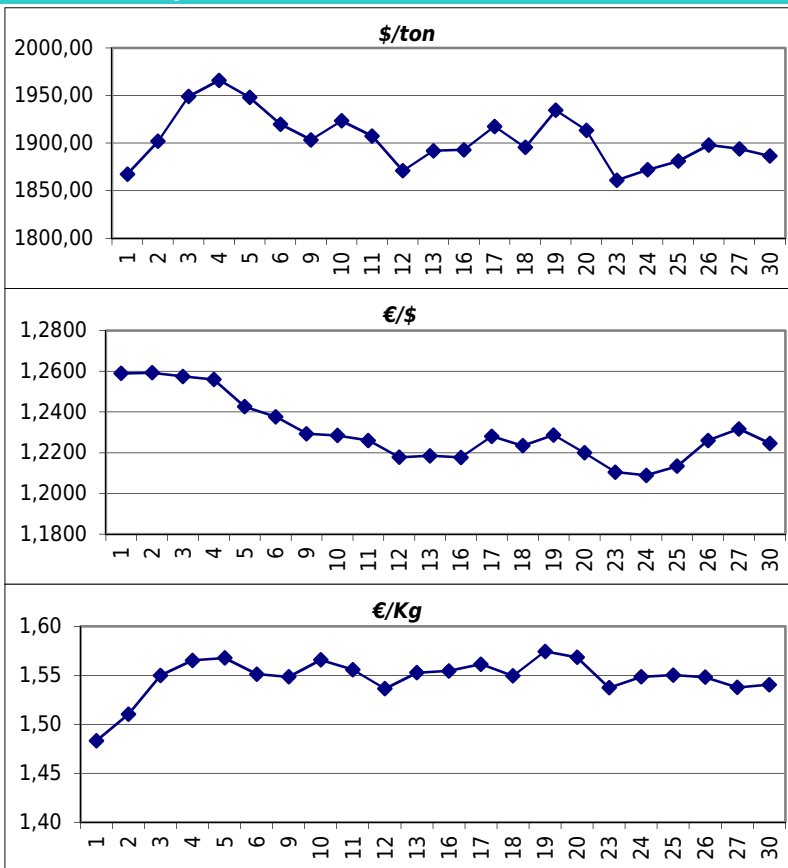


Daily values for the year: 2012 month: 7

Day	\$/ton	€/€	€/Kg
1			
2	1.902,0	1,2593	1,51
3	1.949,0	1,2575	1,55
4	1.966,0	1,2560	1,57
5	1.948,0	1,2426	1,57
6	1.920,0	1,2377	1,55
7			
8			
9	1.903,5	1,2293	1,55
10	1.923,5	1,2285	1,57
11	1.907,5	1,2260	1,56
12	1.871,0	1,2178	1,54
13	1.892,0	1,2185	1,55
14			
15			
16	1.893,0	1,2177	1,55
17	1.917,5	1,2281	1,56
18	1.895,5	1,2234	1,55
19	1.934,5	1,2287	1,57
20	1.913,5	1,2200	1,57
21			
22			
23	1.861,0	1,2105	1,54
24	1.872,0	1,2089	1,55
25	1.881,0	1,2134	1,55
26	1.898,0	1,2260	1,55
27	1.894,0	1,2317	1,54
28			
29			
30	1.886,5	1,2246	1,54
31	1.900,5	1,2284	1,55



Last 24 months average €/Kg

Month	€/Kg
8/2010	1,64
9/2010	1,68
10/2010	1,71
11/2010	1,73
12/2010	1,79
1/2011	1,84
2/2011	1,85
3/2011	1,85
4/2011	1,86
5/2011	1,81
6/2011	1,80
7/2011	1,78
8/2011	1,69
9/2011	1,69
10/2011	1,61
11/2011	1,54
12/2011	1,54
1/2012	1,69
2/2012	1,70
3/2012	1,69
4/2012	1,59
5/2012	1,60
6/2012	1,54
7/2012	1,55

