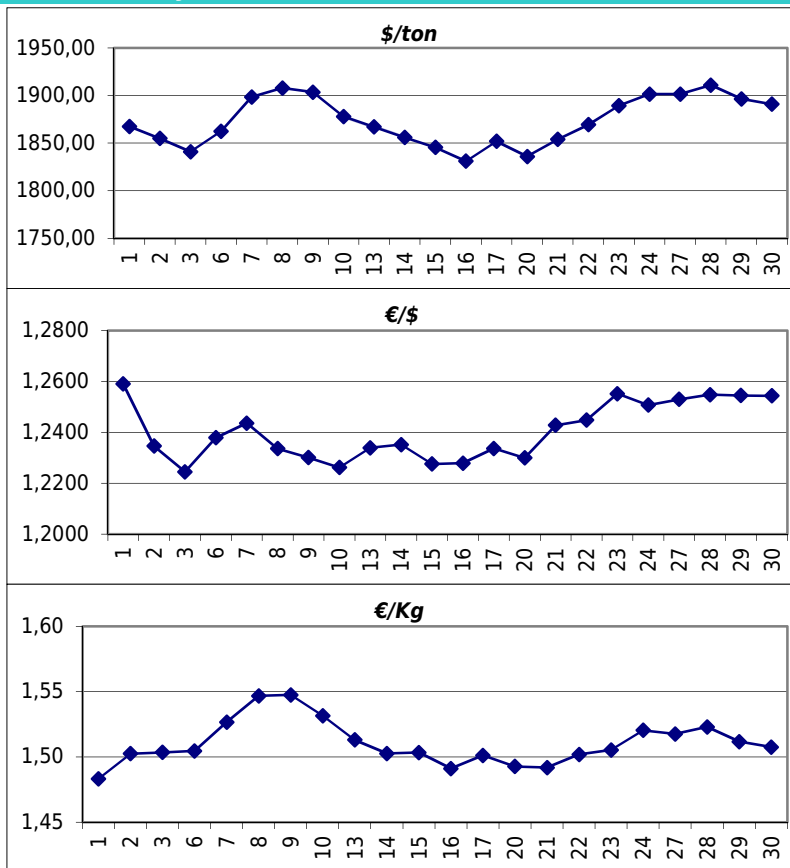


### Daily values for the year: 2012 month: 8

Day	\$/ton	€/€	€/Kg
1			
2	1.855,0	1,2346	1,50
3	1.841,0	1,2245	1,50
4			
5			
6	1.862,5	1,2379	1,50
7	1.898,5	1,2436	1,53
8	1.908,0	1,2336	1,55
9	1.903,5	1,2301	1,55
10	1.878,0	1,2262	1,53
11			
12			
13	1.867,0	1,2339	1,51
14	1.856,0	1,2352	1,50
15	1.845,5	1,2276	1,50
16	1.831,0	1,2279	1,49
17	1.852,0	1,2337	1,50
18			
19			
20	1.836,0	1,2300	1,49
21	1.854,0	1,2428	1,49
22	1.869,5	1,2448	1,50
23	1.889,5	1,2552	1,51
24	1.901,5	1,2507	1,52
25			
26			
27	1.901,5	1,2530	1,52
28	1.911,0	1,2548	1,52
29	1.896,5	1,2545	1,51
30	1.891,0	1,2544	1,51
31	1.870,0	1,2611	1,48



### Last 24 months average €/Kg

Month	€/Kg
9/2010	1,68
10/2010	1,71
11/2010	1,73
12/2010	1,79
1/2011	1,84
2/2011	1,85
3/2011	1,85
4/2011	1,86
5/2011	1,81
6/2011	1,80
7/2011	1,78
8/2011	1,69
9/2011	1,69
10/2011	1,61
11/2011	1,54
12/2011	1,54
1/2012	1,69
2/2012	1,70
3/2012	1,69
4/2012	1,59
5/2012	1,60
6/2012	1,54
7/2012	1,55
8/2012	1,51

