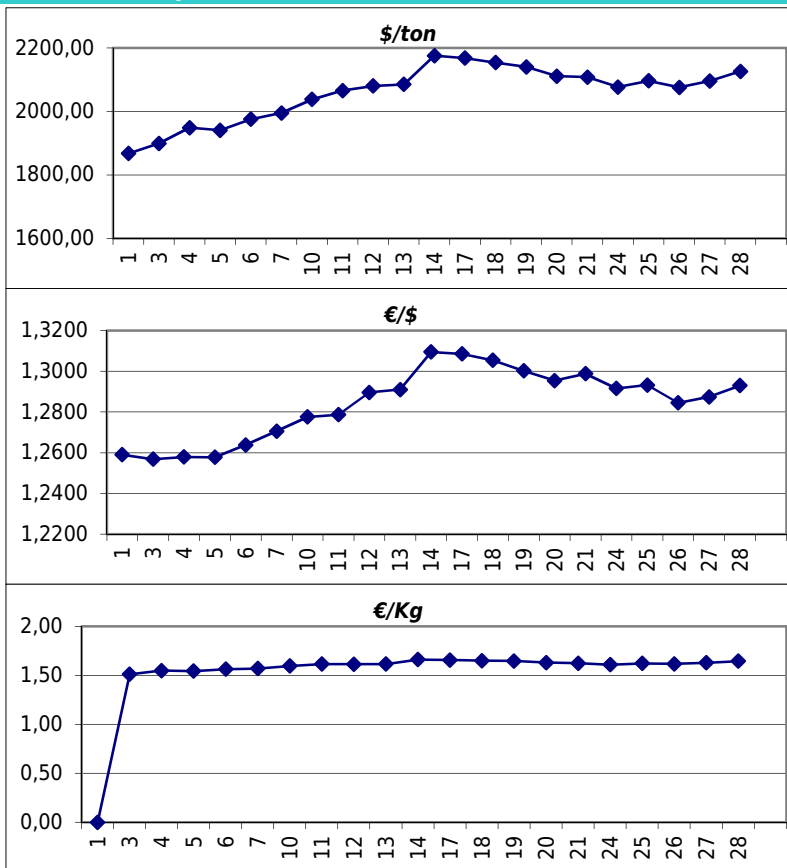


Daily values for the year: 2012 month: 9

Day	\$/ton	€/€	€/Kg
1			
2			
3	1.899,0	1,2568	1,51
4	1.948,5	1,2579	1,55
5	1.940,5	1,2578	1,54
6	1.975,5	1,2638	1,56
7	1.995,0	1,2706	1,57
8			
9			
10	2.038,0	1,2776	1,60
11	2.065,5	1,2787	1,62
12	2.080,5	1,2896	1,61
13	2.085,5	1,2910	1,62
14	2.175,5	1,3095	1,66
15			
16			
17	2.168,0	1,3086	1,66
18	2.154,0	1,3054	1,65
19	2.140,5	1,3002	1,65
20	2.111,0	1,2954	1,63
21	2.108,0	1,2988	1,62
22			
23			
24	2.077,0	1,2916	1,61
25	2.096,5	1,2932	1,62
26	2.076,0	1,2845	1,62
27	2.096,0	1,2874	1,63
28	2.126,0	1,2930	1,64
29			
30			



Last 24 months average €/Kg

Month	€/Kg
10/2010	1,71
11/2010	1,73
12/2010	1,79
1/2011	1,84
2/2011	1,85
3/2011	1,85
4/2011	1,86
5/2011	1,81
6/2011	1,80
7/2011	1,78
8/2011	1,69
9/2011	1,69
10/2011	1,61
11/2011	1,54
12/2011	1,54
1/2012	1,69
2/2012	1,70
3/2012	1,69
4/2012	1,59
5/2012	1,60
6/2012	1,54
7/2012	1,55
8/2012	1,51
9/2012	1,61

