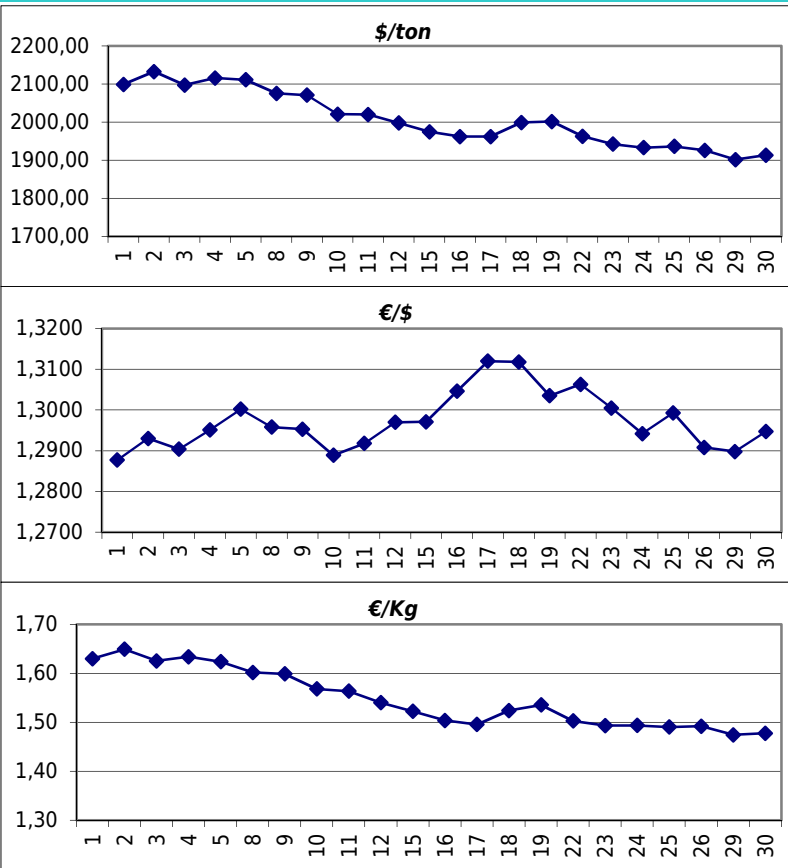


Daily values for the year: 2012 month: 10

Day	\$/ton	€/€	€/Kg
1	2.099,0	1,2877	1,63
2	2.132,5	1,2930	1,65
3	2.097,5	1,2904	1,63
4	2.116,0	1,2951	1,63
5	2.111,0	1,3002	1,62
6			
7			
8	2.075,5	1,2958	1,60
9	2.071,0	1,2953	1,60
10	2.021,0	1,2889	1,57
11	2.020,0	1,2918	1,56
12	1.997,5	1,2970	1,54
13			
14			
15	1.974,5	1,2971	1,52
16	1.962,0	1,3046	1,50
17	1.962,0	1,3120	1,50
18	1.999,0	1,3118	1,52
19	2.001,5	1,3035	1,54
20			
21			
22	1.963,0	1,3063	1,50
23	1.942,0	1,3005	1,49
24	1.933,0	1,2942	1,49
25	1.936,5	1,2993	1,49
26	1.926,0	1,2908	1,49
27			
28			
29	1.901,5	1,2898	1,47
30	1.913,0	1,2947	1,48
31	1.913,0	1,2962	1,48



Last 24 months average €/Kg

Month	€/Kg
11/2010	1,73
12/2010	1,79
1/2011	1,84
2/2011	1,85
3/2011	1,85
4/2011	1,86
5/2011	1,81
6/2011	1,80
7/2011	1,78
8/2011	1,69
9/2011	1,69
10/2011	1,61
11/2011	1,54
12/2011	1,54
1/2012	1,69
2/2012	1,70
3/2012	1,69
4/2012	1,59
5/2012	1,60
6/2012	1,54
7/2012	1,55
8/2012	1,51
9/2012	1,61
10/2012	1,54

