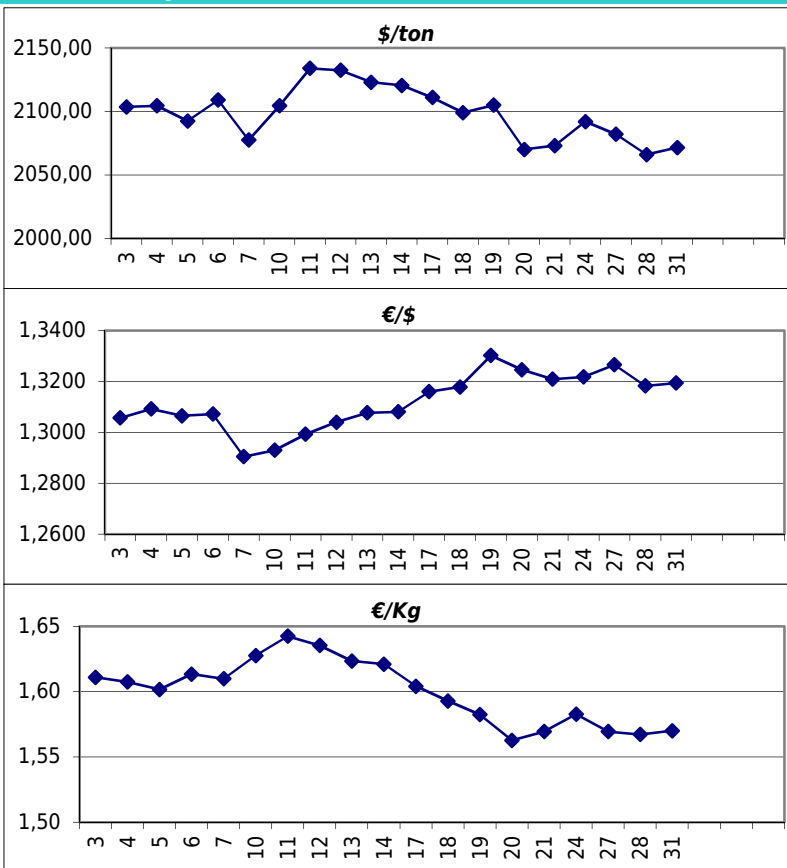


Daily values for the year: 2012 month: 12

Day	\$/ton	€/€	€/Kg
1			
2			
3	2.103,5	1,3057	1,61
4	2.104,5	1,3092	1,61
5	2.092,5	1,3065	1,60
6	2.109,0	1,3072	1,61
7	2.077,5	1,2905	1,61
8			
9			
10	2.104,5	1,2930	1,63
11	2.134,0	1,2993	1,64
12	2.132,5	1,3040	1,64
13	2.123,0	1,3077	1,62
14	2.120,5	1,3081	1,62
15			
16			
17	2.111,0	1,3160	1,60
18	2.099,0	1,3178	1,59
19	2.105,0	1,3302	1,58
20	2.070,0	1,3246	1,56
21	2.073,0	1,3209	1,57
22			
23			
24	2.092,0	1,3218	1,58
25			
26			
27	2.082,0	1,3266	1,57
28	2.066,0	1,3183	1,57
29			
30			
31	2.071,5	1,3194	1,57



Last 24 months average €/Kg

Month	€/Kg
1/2011	1,84
2/2011	1,85
3/2011	1,85
4/2011	1,86
5/2011	1,81
6/2011	1,80
7/2011	1,78
8/2011	1,69
9/2011	1,69
10/2011	1,61
11/2011	1,54
12/2011	1,54
1/2012	1,69
2/2012	1,70
3/2012	1,69
4/2012	1,59
5/2012	1,60
6/2012	1,54
7/2012	1,55
8/2012	1,51
9/2012	1,61
10/2012	1,54
11/2012	1,53
12/2012	1,60

