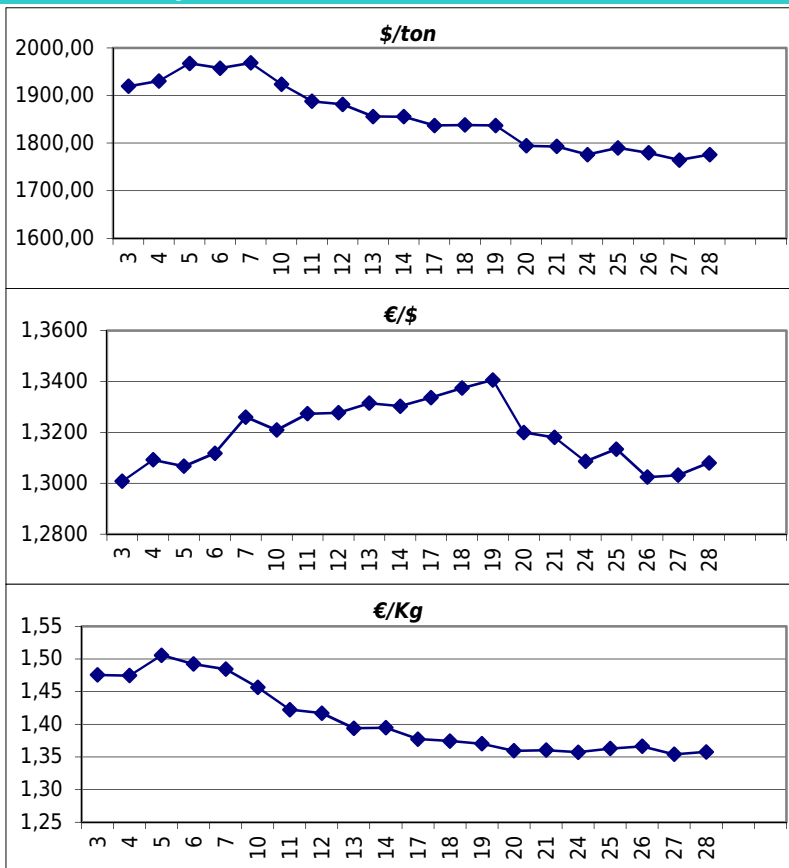


### Daily values for the year: 2013 month: 6

Day	\$/ton	€/€	€/Kg
1			
2			
3	1.919,5	1,3008	1,48
4	1.930,5	1,3092	1,47
5	1.967,5	1,3067	1,51
6	1.957,5	1,3118	1,49
7	1.968,5	1,3260	1,48
8			
9			
10	1.924,0	1,3209	1,46
11	1.888,0	1,3273	1,42
12	1.881,5	1,3277	1,42
13	1.856,0	1,3315	1,39
14	1.855,5	1,3303	1,39
15			
16			
17	1.837,0	1,3337	1,38
18	1.838,0	1,3374	1,37
19	1.837,0	1,3406	1,37
20	1.794,5	1,3200	1,36
21	1.793,0	1,3180	1,36
22			
23			
24	1.776,0	1,3086	1,36
25	1.790,0	1,3134	1,36
26	1.779,5	1,3024	1,37
27	1.764,5	1,3032	1,35
28	1.776,0	1,3080	1,36
29			
30			



### Last 24 months average €/Kg

Month	€/Kg
7/2011	1,78
8/2011	1,69
9/2011	1,69
10/2011	1,61
11/2011	1,54
12/2011	1,54
1/2012	1,69
2/2012	1,70
3/2012	1,69
4/2012	1,59
5/2012	1,60
6/2012	1,54
7/2012	1,55
8/2012	1,51
9/2012	1,61
10/2012	1,54
11/2012	1,53
12/2012	1,60
1/2013	1,56
2/2013	1,57
3/2013	1,51
4/2013	1,45
5/2013	1,43
6/2013	1,41

