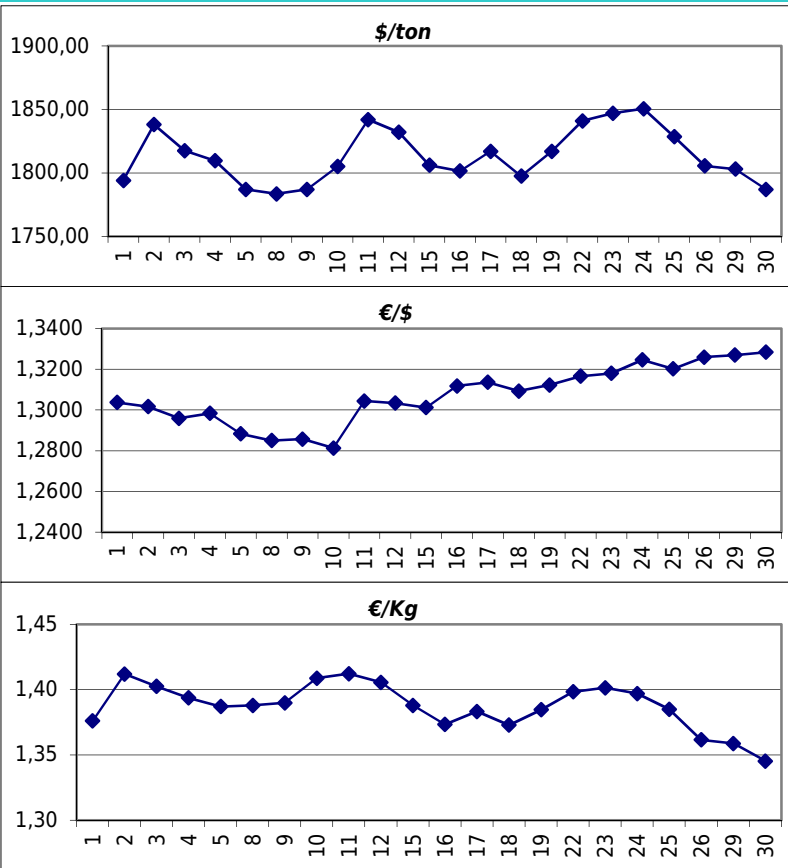


Daily values for the year: 2013 month: 7

Day	\$/ton	€/€	€/Kg
1	1.794,0	1,3037	1,38
2	1.838,0	1,3017	1,41
3	1.817,5	1,2959	1,40
4	1.809,5	1,2984	1,39
5	1.787,0	1,2883	1,39
6			
7			
8	1.783,5	1,2850	1,39
9	1.787,0	1,2857	1,39
10	1.805,0	1,2813	1,41
11	1.842,0	1,3044	1,41
12	1.832,0	1,3034	1,41
13			
14			
15	1.806,0	1,3012	1,39
16	1.801,5	1,3118	1,37
17	1.817,0	1,3136	1,38
18	1.797,5	1,3093	1,37
19	1.817,0	1,3123	1,38
20			
21			
22	1.841,0	1,3166	1,40
23	1.847,0	1,3180	1,40
24	1.850,5	1,3246	1,40
25	1.828,5	1,3202	1,39
26	1.805,5	1,3260	1,36
27			
28			
29	1.803,0	1,3270	1,36
30	1.787,0	1,3284	1,35
31	1.778,0	1,3275	1,34



Last 24 months average €/Kg

Month	€/Kg
8/2011	1,69
9/2011	1,69
10/2011	1,61
11/2011	1,54
12/2011	1,54
1/2012	1,69
2/2012	1,70
3/2012	1,69
4/2012	1,59
5/2012	1,60
6/2012	1,54
7/2012	1,55
8/2012	1,51
9/2012	1,61
10/2012	1,54
11/2012	1,53
12/2012	1,60
1/2013	1,56
2/2013	1,57
3/2013	1,51
4/2013	1,45
5/2013	1,43
6/2013	1,41
7/2013	1,39

