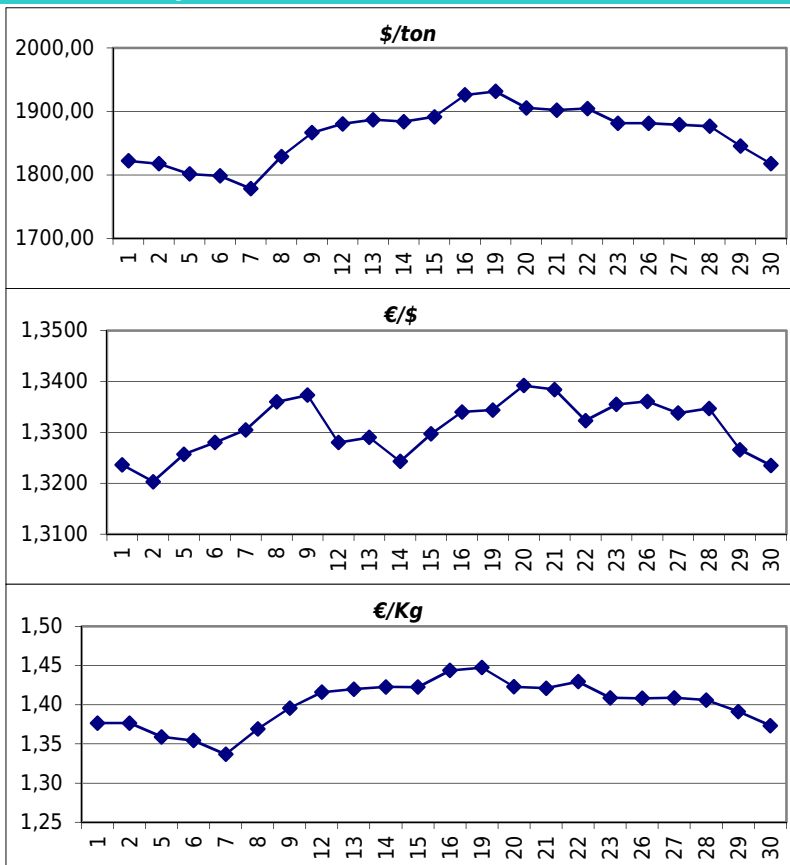


Year: 2013
Month: 8
Average €/kg: 1,40

www.eural.com

Daily values for the year: 2013 month: 8

Day	\$/ton	€/€	€/Kg
1	1.822,0	1,3236	1,38
2	1.817,5	1,3203	1,38
3			
4			
5	1.801,5	1,3257	1,36
6	1.798,5	1,3280	1,35
7	1.778,5	1,3305	1,34
8	1.829,0	1,3360	1,37
9	1.866,5	1,3373	1,40
10			
11			
12	1.880,5	1,3280	1,42
13	1.887,0	1,3290	1,42
14	1.884,0	1,3243	1,42
15	1.891,5	1,3297	1,42
16	1.926,0	1,3340	1,44
17			
18			
19	1.931,5	1,3344	1,45
20	1.905,5	1,3392	1,42
21	1.902,0	1,3384	1,42
22	1.904,5	1,3323	1,43
23	1.881,5	1,3355	1,41
24			
25			
26	1.881,5	1,3361	1,41
27	1.879,0	1,3338	1,41
28	1.876,5	1,3347	1,41
29	1.845,5	1,3266	1,39
30	1.817,5	1,3235	1,37
31			



Last 24 months average €/Kg

Month	€/Kg
9/2011	1,69
10/2011	1,61
11/2011	1,54
12/2011	1,54
1/2012	1,69
2/2012	1,70
3/2012	1,69
4/2012	1,59
5/2012	1,60
6/2012	1,54
7/2012	1,55
8/2012	1,51
9/2012	1,61
10/2012	1,54
11/2012	1,53
12/2012	1,60
1/2013	1,56
2/2013	1,57
3/2013	1,51
4/2013	1,45
5/2013	1,43
6/2013	1,41
7/2013	1,39
8/2013	1,40

