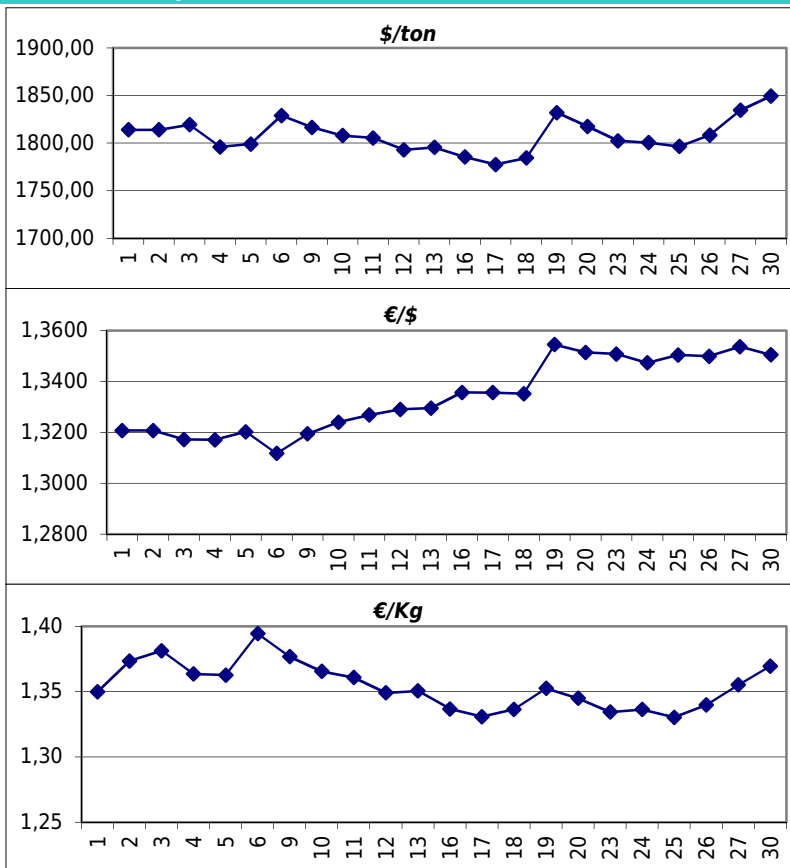


Daily values for the year: 2013 month: 9

Day	\$/ton	€/€	€/Kg
1			
2	1.814,0	1,3207	1,37
3	1.819,5	1,3172	1,38
4	1.796,0	1,3171	1,36
5	1.799,0	1,3202	1,36
6	1.829,0	1,3117	1,39
7			
8			
9	1.816,5	1,3194	1,38
10	1.808,0	1,3240	1,37
11	1.805,5	1,3268	1,36
12	1.793,0	1,3290	1,35
13	1.795,5	1,3295	1,35
14			
15			
16	1.785,5	1,3357	1,34
17	1.777,5	1,3356	1,33
18	1.784,5	1,3352	1,34
19	1.832,0	1,3545	1,35
20	1.817,5	1,3514	1,34
21			
22			
23	1.802,5	1,3508	1,33
24	1.800,5	1,3473	1,34
25	1.796,5	1,3504	1,33
26	1.808,5	1,3499	1,34
27	1.834,5	1,3537	1,36
28			
29			
30	1.849,5	1,3505	1,37



Last 24 months average €/Kg

Month	€/Kg
10/2011	1,61
11/2011	1,54
12/2011	1,54
1/2012	1,69
2/2012	1,70
3/2012	1,69
4/2012	1,59
5/2012	1,60
6/2012	1,54
7/2012	1,55
8/2012	1,51
9/2012	1,61
10/2012	1,54
11/2012	1,53
12/2012	1,60
1/2013	1,56
2/2013	1,57
3/2013	1,51
4/2013	1,45
5/2013	1,43
6/2013	1,41
7/2013	1,39
8/2013	1,40
9/2013	1,35

