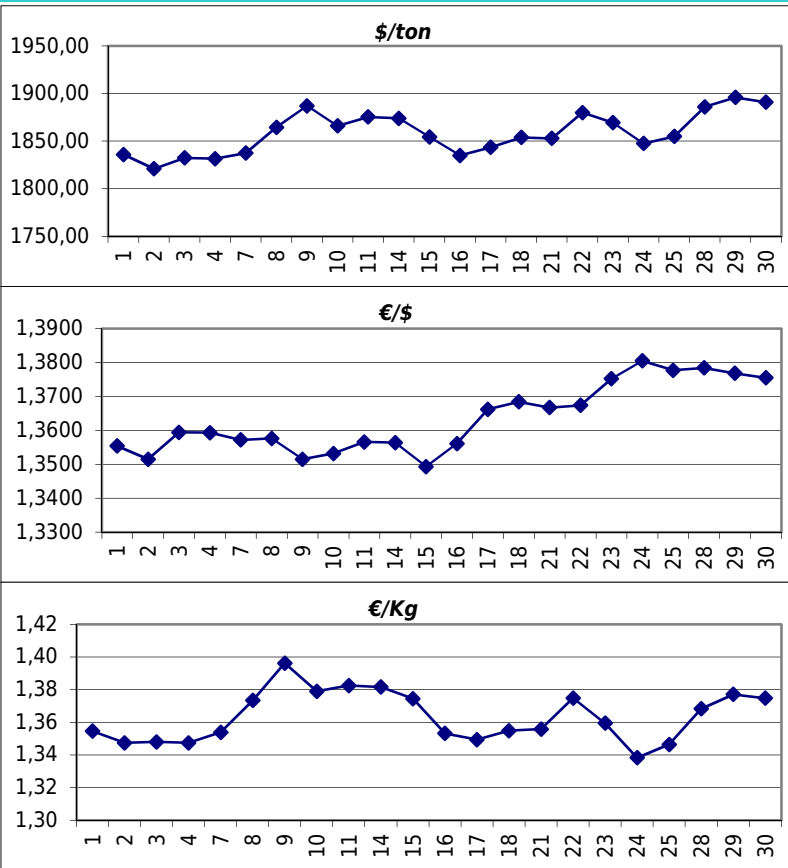


Daily values for the year: 2013 month: 10

Day	\$/ton	€/€	€/Kg
1	1.836,0	1,3554	1,35
2	1.821,0	1,3515	1,35
3	1.832,5	1,3594	1,35
4	1.831,5	1,3593	1,35
5			
6			
7	1.837,5	1,3572	1,35
8	1.864,5	1,3576	1,37
9	1.887,0	1,3515	1,40
10	1.866,0	1,3532	1,38
11	1.875,5	1,3566	1,38
12			
13			
14	1.874,0	1,3564	1,38
15	1.854,5	1,3493	1,37
16	1.835,0	1,3561	1,35
17	1.843,5	1,3662	1,35
18	1.854,0	1,3684	1,35
19			
20			
21	1.853,0	1,3667	1,36
22	1.880,0	1,3674	1,37
23	1.869,5	1,3752	1,36
24	1.847,5	1,3805	1,34
25	1.855,0	1,3777	1,35
26			
27			
28	1.886,0	1,3784	1,37
29	1.896,0	1,3768	1,38
30	1.891,0	1,3755	1,37
31	1.876,0	1,3641	1,38



Last 24 months average €/Kg

Month	€/Kg
11/2011	1,54
12/2011	1,54
1/2012	1,69
2/2012	1,70
3/2012	1,69
4/2012	1,59
5/2012	1,60
6/2012	1,54
7/2012	1,55
8/2012	1,51
9/2012	1,61
10/2012	1,54
11/2012	1,53
12/2012	1,60
1/2013	1,56
2/2013	1,57
3/2013	1,51
4/2013	1,45
5/2013	1,43
6/2013	1,41
7/2013	1,39
8/2013	1,40
9/2013	1,35
10/2013	1,36

