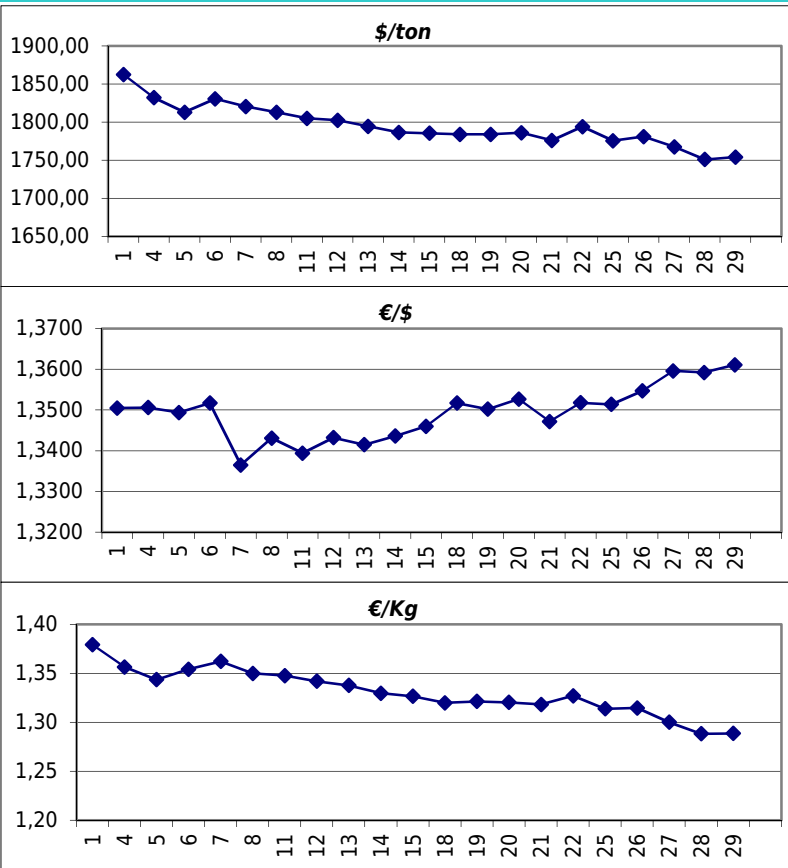


### Daily values for the year: 2013 month: 11

Day	\$/ton	€/€	€/Kg
1	1.862,5	1,3505	1,38
2			
3			
4	1.832,0	1,3506	1,36
5	1.813,0	1,3494	1,34
6	1.830,5	1,3517	1,35
7	1.820,5	1,3365	1,36
8	1.813,0	1,3431	1,35
9			
10			
11	1.805,0	1,3394	1,35
12	1.802,5	1,3432	1,34
13	1.794,5	1,3415	1,34
14	1.786,5	1,3436	1,33
15	1.785,5	1,3460	1,33
16			
17			
18	1.784,0	1,3517	1,32
19	1.784,0	1,3502	1,32
20	1.786,0	1,3527	1,32
21	1.776,0	1,3472	1,32
22	1.794,0	1,3518	1,33
23			
24			
25	1.775,5	1,3514	1,31
26	1.781,0	1,3547	1,31
27	1.767,5	1,3596	1,30
28	1.751,0	1,3592	1,29
29	1.754,0	1,3611	1,29
30			



### Last 24 months average €/Kg

Month	€/Kg
12/2011	1,54
1/2012	1,69
2/2012	1,70
3/2012	1,69
4/2012	1,59
5/2012	1,60
6/2012	1,54
7/2012	1,55
8/2012	1,51
9/2012	1,61
10/2012	1,54
11/2012	1,53
12/2012	1,60
1/2013	1,56
2/2013	1,57
3/2013	1,51
4/2013	1,45
5/2013	1,43
6/2013	1,41
7/2013	1,39
8/2013	1,40
9/2013	1,35
10/2013	1,36
11/2013	1,33

