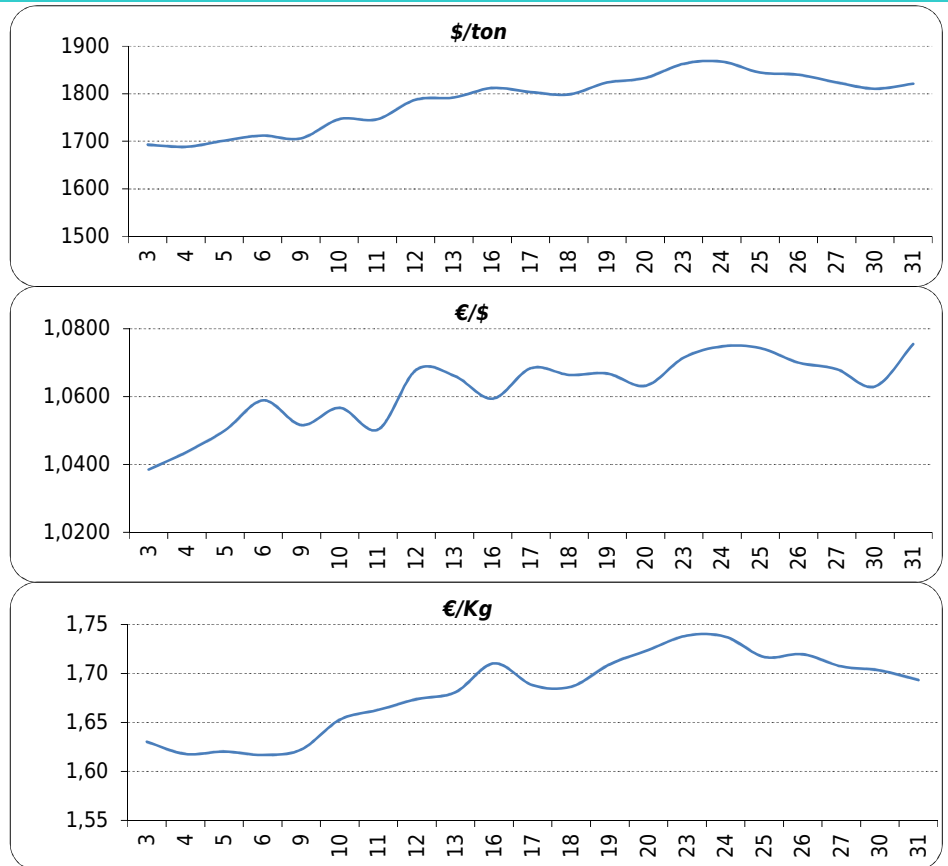


Daily values for the year: 2017 month: 2

Day	\$/ton	€/\$	€/Kg
1	1.819,0	1,0790	1,69
2	1.821,5	1,0808	1,69
3	1.815,5	1,0741	1,69
4			
5			
6	1.826,5	1,0712	1,71
7	1.824,0	1,0675	1,71
8	1.840,5	1,0665	1,73
9	1.855,5	1,0692	1,74
10	1.858,0	1,0629	1,75
11			
12			
13	1.872,0	1,0629	1,76
14	1.901,0	1,0623	1,79
15	1.884,5	1,0555	1,79
16	1.892,0	1,0652	1,78
17	1.879,0	1,0650	1,76
18			
19			
20	1.888,0	1,0616	1,78
21	1.890,0	1,0537	1,79
22	1.877,5	1,0513	1,79
23	1.890,5	1,0573	1,79
24	1.881,0	1,0609	1,77
25			
26			
27	1.905,5	1,0587	1,80
28	1.895,5	1,0597	1,79



Last 24 months average €/Kg

Month	€/Kg
03/15	1,64
04/15	1,68
05/15	1,65
06/15	1,54
07/15	1,53
08/15	1,41
09/15	1,43
10/15	1,38
11/15	1,38
12/15	1,38
01/16	1,36
02/16	1,38
03/16	1,39
04/16	1,39
05/16	1,39
06/16	1,43
07/16	1,48
08/16	1,47
09/16	1,43
10/16	1,51
11/16	1,61
12/16	1,63
01/17	1,68
02/17	1,75

